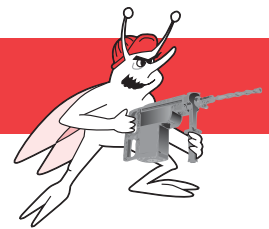


FORGED HAMMER TOOLS



SCALING CHISELS



| Shank Style | Description | Part No. | List Price | Wt. (lbs) |
|-------------|------------------|----------|------------|-----------|
| SPLINE* | 12" OAL X 2" | SC-12S | \$46.00 | 1.6 |
| | 12" OAL X 3" | SC-312S | 77.00 | 2.3 |
| | 18" OAL X 2" | SC-18S | 51.00 | 2.4 |
| SDS-max | 12" OAL X 2" | SC-12MX | 49.00 | 1.6 |
| | 12" OAL x 3" | SC-312MX | 77.00 | 2.5 |
| | 18" OAL X 2" | SC-18MX | 57.00 | 2.4 |
| | 18" OAL X 3" | SC-318MX | 96.00 | 2.3 |
| | 24" OAL X 2" | SC-24MX | 117.00 | 2.6 |
| | 36" OAL X 2" | SC-36MX | 136.00 | 4.0 |
| SDS+ | 10" OAL X 1 1/2" | SC-12DS | 46.00 | 0.8 |
| 3/4" Hex | 12" OAL X 2" | SC-12HX | 46.00 | 1.6 |
| | 12" OAL X 3" | SC-312HX | 50.00 | 2.5 |

COLD CHISELS



- Edging, chipping and channeling concrete, masonry or brick

| Shank Style | Description | Part No. | List Price | Wt. (lbs) |
|-------------|----------------|----------|------------|-----------|
| SPLINE* | 12" OAL X 1" | CC-12S | \$25.00 | 1.4 |
| | 18" OAL X 1" | CC-18S | 36.00 | 2.3 |
| SDS-max | 12" OAL X 1" | CC-12MX | 33.00 | 1.4 |
| | 18" OAL X 1" | CC-18MX | 39.00 | 2.3 |
| | 24" OAL X 1" | CC-24MX | 87.00 | 2.6 |
| | 36" OAL X 1" | CC-36MX | 108.00 | 3.8 |
| SDS+ | 10" OAL X 3/4" | CC-12DS | 35.00 | 0.8 |
| 3/4" Hex | 12" OAL X 1" | CC-12HX | 25.00 | 1.4 |
| | 18" OAL X 1" | CC-18HX | 33.00 | 2.3 |

BULL POINTS or MOIL POINTS



- Breaking up concrete, brick, asphalt, etc.
- Light demolition applications
- Starting holes in concrete slabs

| Shank Style | Description | Part No. | List Price | Wt. (lbs) |
|-------------|-------------|----------|------------|-----------|
| SPLINE* | 12" OAL | BP-12S | \$25.00 | 1.4 |
| | 18" OAL | BP-18S | 36.00 | 2.3 |
| SDS-max | 12" OAL | BP-12MX | 31.00 | 1.4 |
| | 18" OAL | BP-18MX | 37.00 | 2.3 |
| | 24" OAL | BP-24MX | 88.00 | 2.6 |
| | 36" OAL | BP-36MX | 109.00 | 3.9 |
| SDS+ | 10" OAL | BP-12DS | 35.00 | 0.8 |

BUSHING TOOLS



- Roughing concrete surface prior to applying a surface finish

| Shank Style | Description | Part No. | List Price | Wt. (lbs) |
|-------------|---------------------|----------|------------|-----------|
| SPLINE* | 1 pc Bushing Tool | BT-16S | \$122.00 | 2.6 |
| SDS-max | 1 pc Bushing Tool | BT-16MX | 126.00 | 2.6 |
| | 16 Pt. Bushing Head | BH-16 | 51.00 | 1.1 |
| SPLINE* | Bushing Head Shk | BS-8S | 29.00 | 1.0 |
| SDS-max | Bushing Head Shk | BS-8MX | 34.00 | 1.0 |

Bushing tool head is 1 1/2" x 1 1/2"

CARBIDE BUSHING TOOLS



| | | | | |
|---------|-------------------|----------|----------|-----|
| SPLINE* | 1 pc Bushing Tool | BT-16CS | \$365.00 | 3.0 |
| SDS-max | 1 pc Bushing Tool | BT-16CMX | 371.00 | 3.0 |

Carbide Bushing Tools have 16 carbide points

Carbide bushing tool head is 1 1/2" x 1 1/2"

CLAY SPADE



- Digging clay, dirt, hard-packed gravel, shale, etc.

| Shank Style | Description | Part No. | List Price | Wt. (lbs) |
|-------------|---------------------------|----------|------------|-----------|
| SPLINE* | 4 1/2" X 5 1/2" X 15 1/2" | CS-S | \$150.00 | 4.8 |
| SDS-max | 4 1/2" X 5 1/2" X 15 1/2" | CS-MX | 154.00 | 4.2 |

ASPHALT CUTTER



- Cutting asphalt or hard ground – not for concrete

| Shank Style | Description | Part No. | List Price | Wt. (lbs) |
|-------------|---------------------------|----------|------------|-----------|
| SDS-max | 3 1/2" X 4 1/2" X 15 1/2" | AC-MX | 185.00 | 4.3 |

GROUND ROD DRIVERS



- Driving electrical grounding rods into earth

| Shank Style | Description | Part No. | List Price | Wt. (lbs) |
|-------------|-----------------------|----------|------------|-----------|
| SPLINE* | for 5/8" - 3/4" rebar | DR-S | \$126.00 | 1.1 |
| SDS-max | for 5/8" - 3/4" rebar | DR-MX | 132.00 | 1.1 |



* Please note! Spline Shank Hammer Iron will not have Splines on the Shank.