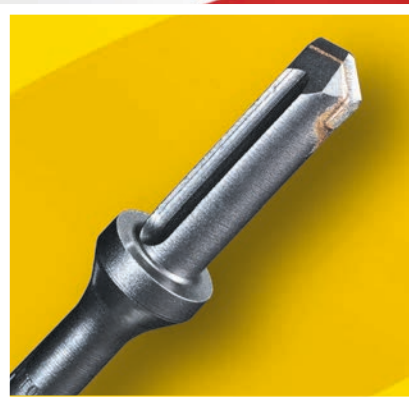
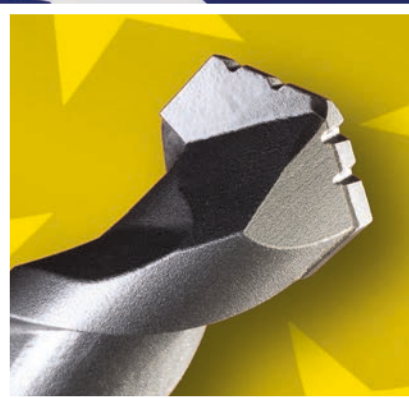
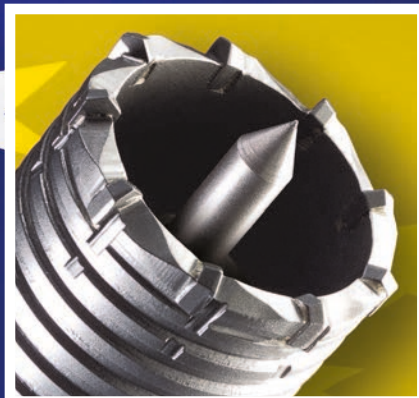


RELTON CORPORATION



ARCADIA, CALIFORNIA, U.S.A.
(800) 423-1505 • www.relton.com



R-22

RELTON CORPORATION

RELTON STORY

Relton Corporation began in 1946 as the Termite Drill Company. The company's first product was the multiple-carbide, core-style, rotary masonry drill bit invented by our founder. This basic design quickly became the standard of the industry. Relton has since become the **broadest-line supplier of hammer and rotary bits and hole saws.**

Recent Relton innovations include our patented **Pyramid Point®** hammer tip design with a central point surrounded by 4 cutters for precise smooth drilling, in spline, SDS-max, and SDS+. Our **rebar cutters** in straight shank and SDS+ are the industry standard, and our general purpose **Groo-V Tip® (GRT®)** rotary/percussion bit line is perfect for hard metal, granite, and other difficult materials.

New Rapid Tap®, our ozone-friendly hard-metal cutting fluid, heads a complete line of cutting fluids and oils, which includes **A-9®** for aluminum, bio-degradable **Option 1®**, and more recent additions in the 1990's. In 1994, Relton formulated **TCO-14™** (dark) and **TCO-16™** (light) Thread-Cutting Oil, and in 1995, we introduced **Air-Flo®** air tool oil. Further expansion in 1999 brought **Rel Saw™**, a semi-synthetic fluid for band sawing, **Stick-Kut™**, a lubricating stick wax, and **New Rapid Tap® Paste**.

Relton drill bits are used by the construction trades in the drilling of concrete and other masonry, while the hole saws are used in the cutting of diverse materials such as metal, wood, fiberglass, ceramic tile, pipe and stucco. Relton makes a wide variety of cataloged products, and also specialty bits and hole saws to customers' specifications.

How have we continued in business for over 75 years in the face of stiff competition from much larger companies? **We maintain a high service level** - shipping quickly from the broadest line in the business. **We produce high-quality products** - testing them constantly to ensure that quality. **We're flexible** - making the specialty products you need, not only the cataloged items you see here. **We're unique** - boasting one of the few production-grade, long-lasting hole saw lines in the world.

FACTS TO REMEMBER ABOUT RELTON MASONRY TOOLS

Most Relton bits can be easily resharpened. The high quality carbide tip is also replaceable, allowing for possible rebuilding of the entire bit.

Relton hammer bits comply with ANSI Standard B212.15-1994 where applicable. All Relton Tools should be used in conformity with the power tool manufacturers' specifications.

Special diameters or lengths can be produced on request. Because certain restrictions apply to this offer, please discuss your request with your Authorized Relton Distributor or the Relton factory in Arcadia, California.

WE STAND BEHIND OUR PRODUCTS

All Relton tools are manufactured to exacting specifications and are guaranteed to be free of defects in workmanship or material. If inspection of returned products leads Relton to conclude that a product is defective, Relton will promptly repair or replace that product, free of charge. Relton Corporation assumes no responsibility for products damaged by user misuse or altered by others.

Warranty limitation on extra-long bits: Warranty for breakage is limited to Relton discretion—see page 17 for bit life suggestions. No other guarantee, written or verbal, is authorized.

Please return the tool alleged to be defective, transportation prepaid, to:

Relton Corporation
317 Rolyn Place
Arcadia, California 91007-2838

WARNING

- Protective goggles should be worn when drilling, sawing, etc. Safety steps should be taken in anticipation of possible sudden binding or breakage of any tool.
- Relton Corporation provides a factory resharpening service. We do not recommend that the user attempt to resharpen the tool.
- Relton reserves the right to make design or formula changes at any time, with or without notice.
- Weights listed in this catalog are approximate. They do not include the weight of the box or packing materials.

© Relton Corporation 2022

We manufacture special items on request. If you don't see what you're looking for, call us---we'll try to accommodate your needs. Weights are for product. Boxes and packing material are not included, so do not use to calculate actual shipping weight.

TABLE OF CONTENTS

CARBIDE DIVISION

Technical Information

Carbide Masonry Tools 3

Rotary Hammer Bits

SDS+ 4,5
Quik-Stop 5
SDS-max®, Pyramid Point® 6
Spline, Pyramid Point® 7
Forged Hammer Tools 8
Solid-Body "Hard Head" 9
Hammer Core 10

Adaptors

Quik-Lok™ 5

Rotary Percussion Bits

R4X™ 11
Ram-Tip™ 12
Groo-V Tip® 13
Screw-Type Anchor Bits 13

Rotary Only Bits

Tip-Top™ 11

Rebar Cutters

Rebar Cutters 15

Specialty Carbide Bits

How to Order 16

Factory Service Information

Bit Retipping 17

HOLE SAW DIVISION

Brazed Carbide Hole Saws

Hard Plastic / Stucco 19
Wood / Fiberglass 19
Metal-Cutting 20
Interrupted-Cut 20
Tub, Tile, & Spa 21
Thin Gauge/Sheet Metal 21
Shanks & Pilots 21

Specialty Hole Saws

How to order 22
Porcelain Cutters 22

Factory Service Information

Hole Saw Retipping 17

CHEMICAL DIVISION

Metal-Cutting Fluids

New Rapid Tap® 24
A-9® 24
Option 1® 25

Band Saw Products

Rel Saw™ (Recirculating Fluid) 25
Stick-Kut™ (Stick Wax) 27

Thread Cutting Oil

TCO-14™ Dark 26
TCO-16™ Light 26

Air Tool Oil

Air-FLO® 27

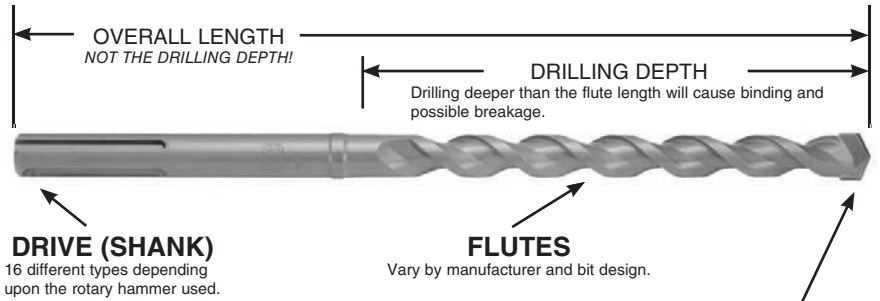
TECHNICAL INFORMATION

CARBIDE MASONRY TOOLS

A.N.S.I. B212.15-1994 AMERICAN NATIONAL STANDARDS INSTITUTE CARBIDE-TIPPED-DRILL TOLERANCES

Developed to insure maximum holding power of concrete anchors by matching drill tolerances to anchor dimensions. Using a drill which is worn or out of tolerance can drastically reduce an anchor's performance.

NOMINAL DRILL DIAMETER	TOLERANCE BAND	NOMINAL DRILL DIAMETER	TOLERANCE BAND
3/16"	.206" - .198"	11/16"	.723" - .713"
1/4"	.268" - .260"	3/4"	.787" - .775"
5/16"	.335" - .327"	7/8"	.917" - .905"
3/8"	.398" - .390"	1"	1.042" - 1.030"
7/16"	.468" - .458"	1 1/8"	1.175" - 1.160"
1/2"	.530" - .520"	1 1/4"	1.300" - 1.285"
9/16"	.592" - .582"	1 3/8"	1.425" - 1.410"
5/8"	.660" - .650"	1 1/2"	1.550" - 1.535"



CARBIDE TIP is composed of a powder made up of Tungsten Carbide, Carbon, Cobalt and other metals which, under heat and pressure, are formed into a bit tip. Since there are only a few manufacturers of carbide, it is primarily the process and quality control of brazing the tip to the drill body which differentiate bit longevity and quality. The brazing material, such as silver-copper alloy, must allow for the difference in expansion and contraction between the carbide tip and the steel body, as well maintain shock-resistance.



1/8" to 1"



1/8" to 1"



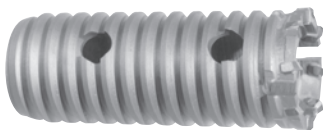
5/32" to 1 1/8"



3/8" to 1 1/2"



3/8" to 2 1/2"



up to 5"

Fast Spiral Rotary: Generally used in rotary drilling. Speed range 450-700 RPM to 1/2" diameter, 350-500 RPM from 5/8" and up. Rotary bits do not break up the concrete, but actually grind it under operator pressure.

Rotary/Percussion: Generally used in lightweight, mechanical, vibrating hammers. Speed range 1300-3500 RPM, at up to 50,000 blows per minute. The impacting action created by the hammer fractures the concrete into tiny granules.

Rotary Hammer: Used in electro-pneumatic rotary hammers. Speed range 400-1000 RPM at up to 4500 blows per minute. SDS+ is currently the most popular shank type for holes up to 5/8". Spline and SDS-max for holes 3/4" and larger.

Rebar Cutter: Used to cut holes through embedded steel reinforcing bar. It is used to prevent damage to the hammer bit, which occurs if the hammer bit is used after rebar is encountered. Must only be used on the rotary-only setting on the drill motor.

Core Bit: The most effective way of drilling a large hole since you are only cutting the circumference. Both rotary and hammer types are available. Rotary core bits require a great deal of pressure and are suitable for very brittle or thin materials. Hammer core bits offer speed and economy only if rebar is not encountered.



California Proposition 65
WARNING: This product can expose you to chemicals including cobalt which is known to the State of California to cause cancer. For more information go to www.P65Warnings.ca.gov



Proposition 65 Warning
You can create dust when you cut, sand, drill or grind materials such as wood, paint, metal, concrete, cement or other masonry. This dust often contains chemicals known to cause cancer, birth defects, or other reproductive harm.

The following referenced trademarks are the property of the companies indicated:

AEG,[®] AEG Power Tool Corp. • B&D,[®] Black & Decker Mfg. Co. • BOSCH,[®] Robert Bosch Corporation • HILTI,[®] Hilti Corporation • HITACHI,[®] Hitachi Koki Company Ltd. • KANGO,[®] Kango Wolf Power Tools U.S.A. • MAKITA,[®] Makita U.S.A., Inc. • METABO,[®] Ferrostaal-Metabo Tool Corporation • MILLERS FALLS,[®] The Ingersoll-Rand Co. • MILWAUKEE,[®] Milwaukee Electric Tool Corporation • PHILLIPS,[®] ITT Phillips Drill Company, PORTER-CABLE,[®] Porter-Cable Corporation • RAMSET,[®] Ramset Fastening Systems • ROCKWELL,[®] Rockwell International, Inc. • RYOBI,[®] Ryobi America Corporation • SDS+[®], SDS-max[®], Robert Bosch Corporation • SKIL,[®] Skil Corporation • TAPCON,[®] ITW Buildex

HAMMER BITS - SDS+ SHANK

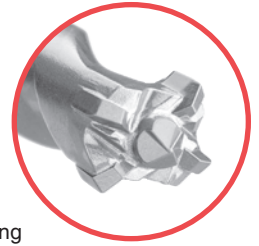


SINGLE CUTTER

POINT DIA.	OVERALL LENGTH	DRILLING DEPTH	PART NO.	WT. (lbs)
5/32"	4 1/2"	2 1/2"	207-1-4*	0.1
5/32"	6"	4"	207-1-6*	0.1
5/32"	8"	6"	207-1-8*	0.1
3/16"	4 1/2"	2 1/2"	207-3-4*	0.1
3/16"	6"	4"	207-3-6*	0.1
3/16"	8"	6"	207-3-8*	0.1
3/16"	10"	8"	207-3-10	0.2
3/16"	14"	12"	207-3-14	0.2
3/16"	20"	18"	207-3-20	0.3
7/32"	6"	4"	207-2-6*	0.1
7/32"	10"	8"	207-2-10	0.3
7/32"	16"	14"	207-2-16	0.5
7/32"	20"	18"	207-2-20	0.2
1/4"	4"	2"	207-4-4*	0.1
1/4"	6"	4"	207-4-6*	0.1
1/4"	8"	6"	207-4-8*	0.2
1/4"	10"	8"	207-4-10	0.3
1/4"	14"	12"	207-4-14	0.3
1/4"	20"	18"	207-4-20	0.4
1/4"	26"	24"	207-4-26	0.5
9/32"	8"	6"	207-4.5-8	0.3
5/16"	6"	4"	207-5-6*	0.2
5/16"	10"	8"	207-5-10	0.3
5/16"	14"	12"	207-5-14	0.3
3/8"	6"	4"	207-6-6*	0.2
3/8"	10"	8"	207-6-10	0.3
3/8"	14"	12"	207-6-14	0.4
3/8"	18"	16"	207-6-18	0.5
3/8"	25"	22"	207-6-25	0.7
3/8"	38"	36"	207-6-38	1.0
7/16"	6"	4"	207-7-6*	0.3
7/16"	12"	10"	207-7-12	0.5
1/2"	6"	4"	207-8-6*	0.3
1/2"	10"	8"	207-8-10	0.4
1/2"	14"	12"	207-8-14	0.6
1/2"	18"	16"	207-8-18	0.8
1/2"	25"	22"	207-8-25	0.9
1/2"	38"	36"	207-8-38	1.3
9/16"	6"	4"	207-9-6*	0.3
9/16"	12"	10"	207-9-12	0.6
9/16"	18"	16"	207-9-18	0.8
5/8"	8"	6"	207-10-8*	0.5
5/8"	14"	12"	207-10-14	0.8
5/8"	18"	16"	207-10-18	0.9
11/16"	10"	8"	207-11-10	0.6
3/4"	8"	6"	207-12-8	0.6
3/4"	14"	12"	207-12-14	1.0
3/4"	18"	16"	207-12-18	1.3
13/16"	14"	12"	207-13-14	1.4
27/32"	8"	6"	207-13A-8	0.8
7/8"	8"	6"	207-14-8	0.8
7/8"	14"	12"	207-14-14	1.4
7/8"	18"	16"	207-14-18	1.7
1"	8"	6"	207-16-8	1.0
1"	14"	12"	207-16-14	2.0
1"	18"	16"	207-16-18	2.3
1 1/8"	8"	6"	207-18-8	1.3
1 1/8"	18"	16"	207-18-18	3.0

MULTIPLE CUTTER

PYRAMID POINT®



- Patented, new technology tip
- 5 Premium-grade carbide inserts
- Faster smoother drilling and longer lasting
- Precise hole location, easy start center point
- Heat-treated, shot-peened, superior steel
- Ultra-efficient dust removal flute design
- Available up to 60" drilling depth
- 38" bits have 12" flute length and undercut body

POINT DIA.	OVERALL LENGTH	DRILLING DEPTH	PART NO.	WT. (lbs)
5/8"	8"	6"	P207-10-8	0.5
5/8"	14"	12"	P207-10-14	0.7
5/8"	18"	16"	P207-10-18	0.8
5/8"	25"	22"	P207-10-25	1.1
5/8"	38"	36"	P207-10-38	2.0
11/16"	25"	22"	P207-11-25	1.3
3/4"	8"	6"	P207-12-8	0.6
3/4"	14"	12"	P207-12-14	1.0
3/4"	18"	16"	P207-12-18	1.2
3/4"	25"	22"	P207-12-25	1.7
3/4"	38"	36"	P207-12-38	2.2
7/8"	8"	6"	P207-14-8	0.7
7/8"	14"	12"	P207-14-14	1.3
7/8"	18"	16"	P207-14-18	1.8
7/8"	38"	36"	P207-14-38	2.8
1"	8"	6"	P207-16-8	1.0
1"	18"	16"	P207-16-18	2.0
1"	25"	22"	P207-16-25	3.0
1"	38"	36"	P207-16-38	3.6
1 1/8"	8"	6"	P207-18-8	1.1
1 1/8"	18"	16"	P207-18-18	2.0

HAMMER BIT-SDS+ 5-PIECE DRILL SETS



Refillable Case

Contains 1 of each:

- 207-3-6 • 207-6-6
- 207-4-6 • 207-8-6
- 207-5-6

PART NO.

WT. (lbs)

SDS+ 207-K5

0.8

* 25 pc. quantities available in bulk packaging

To order bulk, use prefix "B" before part number.
Example: **B207-8-6**

HAMMER BITS - SDS+ SHANK



FEATURES / BENEFITS

- Shoulder prevents over drilling - nice when overhead
- No lost time or energy drilling deeper than necessary
- Less likely to hit reinforcing steel or post-tensioned cable in concrete
- Anchor is set at specified depth, does not drop too far into hole

POINT DIAM.	OVERALL LENGTH	DRILLING DEPTH	PART NO.	WT. (lbs)
1/4"	3-5/16"	13/16"	207STP-4-13	0.08
3/8"	3-1/2"	11/16"	207STP-6-11	0.10
3/8"	3-13/16"	1-1/16"	207STP-6-17	0.12
1/2"	3-7/8"	13/16"	207STP-8-13	0.16
1/2"	4-13/16"	1-11/16"	207STP-8-27	0.20
5/8"	4-1/8"	1-3/16"	207STP-10-19	0.22
5/8"	4-7/8"	2-1/16"	207STP-10-33	0.24

SDS+ EXTENSION



SDS+ EXTENSION

PART NO.	DESCRIPTION	WT. (lbs)
207EXT18	SDS+ to SDS+ 18"	1.9
207EXT30	SDS+ to SDS+ 30"	2.7

Use of extensions increases drill reach, not drill depth.
Additional Shank-types available on request.
Replacement parts are available on request.

QUIK-LOK™ ADAPTORS

Quik-Lok™

Adaptors accept SDS+ Shank Bits



SDS-max SHANK

PART NO.	DESCRIPTION	WT.(lbs)
QL-MX	SDS-max to SDS+	1.4



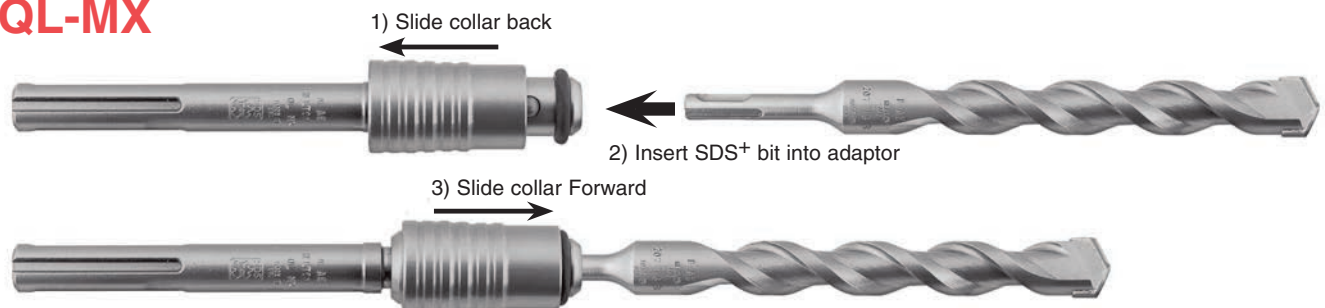
SPLINE SHANK

PART NO.	DESCRIPTION	WT. (lbs)
QL-202	Spline to SDS+	1.4

QUIK-LOK™ ADAPTORS

3 Easy Steps

QL-MX



HAMMER BITS – SDS-max® SHANK



SINGLE CUTTER

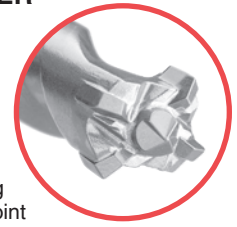
POINT DIA.	OVERALL LENGTH	DRILLING DEPTH	PART NO.	WT. (lbs)
3/8"	10"	4"	MX-6-10	0.8
3/8"	14"	8"	MX-6-14	0.8
3/8"	18"	12"	MX-6-18	0.9
7/16"	14"	8"	MX-7-14	0.8
1/2"	14"	8"	MX-8-14	0.9
1/2"	18"	12"	MX-8-18	1.1
1/2"	22"	16"	MX-8-22	1.2
1/2"	28"	22"	MX-8-28	1.4
1/2"	42"	36"	MX-8-42	1.7
1/2"	54"	48"	MX-8-54	2.2
1/2"	66"	60"	MX-8-66	2.7
9/16"	14"	8"	MX-9-14	1.0
9/16"	18"	12"	MX-9-18	1.1
9/16"	22"	16"	MX-9-22	1.3
9/16"	28"	22"	MX-9-28	1.5
5/8"	14"	8"	MX-10-14	1.1
5/8"	18"	12"	MX-10-18	1.3
5/8"	22"	16"	MX-10-22	1.4
5/8"	28"	22"	MX-10-28	1.6
11/16"	14"	8"	MX-11-14	1.1
11/16"	22"	16"	MX-11-22	1.6
3/4"	14"	8"	MX-12-14	1.2
3/4"	18"	12"	MX-12-18	1.5
3/4"	22"	16"	MX-12-22	1.7
3/4"	28"	22"	MX-12-28	2.0
13/16"	14"	8"	MX-13-14	1.3
13/16"	22"	16"	MX-13-22	1.9
27/32"	14"	8"	MX-13A-14	1.3
27/32"	22"	16"	MX-13A-22	1.9
7/8"	14"	8"	MX-14-14	1.4
7/8"	18"	12"	MX-14-18	1.8
7/8"	22"	16"	MX-14-22	2.1
7/8"	28"	22"	MX-14-28	2.6
1"	14"	8"	MX-16-14	1.7
1"	18"	12"	MX-16-18	2.2
1"	22"	16"	MX-16-22	2.6
1"	28"	22"	MX-16-28	3.1
1 1/8"	14"	8"	MX-18-14	1.9
1 1/8"	22"	16"	MX-18-22	3.1
1 1/8"	28"	22"	MX-18-28	3.9
1 1/4"	14"	8"	MX-20-14	2.3
1 1/4"	22"	16"	MX-20-22	3.6
1 1/4"	28"	22"	MX-20-28	4.3
1 3/8"	22"	16"	MX-22-22	4.1
1 1/2"	14"	8"	MX-24-14	2.9
1 1/2"	22"	16"	MX-24-22	4.8
1 1/2"	28"	22"	MX-24-28	6.2

If longer lengths are needed, please contact the factory to place a special order.



MULTIPLE CUTTER

PYRAMID POINT®



- Patented, new technology tip
- 5 Premium-grade carbide inserts
- Faster smoother drilling and longer lasting
- Precise hole location, easy start center point
- Heat-treated, shot-peened, superior steel
- Ultra-efficient dust removal flute design
- Available in longer lengths; call factory for a quote
- 42", 54", & 66" bits have 31" flute length and undercut body

POINT DIA.	OVERALL LENGTH	DRILLING DEPTH	PART NO.	WT. (lbs)
5/8"	14"	8"	PMX-10-14	1.1
5/8"	18"	12"	PMX-10-18	1.3
5/8"	22"	16"	PMX-10-22	1.4
5/8"	32"	26"	PMX-10-32	1.8
5/8"	42"	36"	PMX-10-42	2.8
5/8"	54"	48"	PMX-10-54	2.8
5/8"	66"	60"	PMX-10-66	3.4
3/4"	14"	8"	PMX-12-14	1.2
3/4"	18"	12"	PMX-12-18	1.5
3/4"	22"	16"	PMX-12-22	1.7
3/4"	32"	26"	PMX-12-32	2.3
3/4"	42"	36"	PMX-12-42	2.9
3/4"	54"	48"	PMX-12-54	3.5
3/4"	66"	60"	PMX-12-66	4.5
7/8"	14"	8"	PMX-14-14	1.4
7/8"	18"	12"	PMX-14-18	1.8
7/8"	22"	16"	PMX-14-22	2.1
7/8"	32"	26"	PMX-14-32	2.9
7/8"	42"	36"	PMX-14-42	3.7
7/8"	54"	48"	PMX-14-54	4.6
7/8"	66"	60"	PMX-14-66	5.6
1"	14"	8"	PMX-16-14	1.7
1"	18"	12"	PMX-16-18	2.2
1"	22"	16"	PMX-16-22	2.6
1"	32"	26"	PMX-16-32	3.5
1"	42"	36"	PMX-16-42	4.6
1"	54"	48"	PMX-16-54	5.8
1"	66"	60"	PMX-16-66	6.7
1 1/8"	14"	8"	PMX-18-14	1.9
1 1/8"	22"	16"	PMX-18-22	3.1
1 1/8"	32"	26"	PMX-18-32	4.2
1 1/8"	42"	36"	PMX-18-42	5.4
1 1/8"	54"	48"	PMX-18-54	6.6
1 1/8"	66"	60"	PMX-18-66	8.0
1 1/4"	14"	8"	PMX-20-14	2.3
1 1/4"	22"	16"	PMX-20-22	3.6
1 1/4"	32"	26"	PMX-20-32	5.1
1 1/4"	42"	36"	PMX-20-42	6.4
1 1/4"	54"	48"	PMX-20-54	8.1
1 1/4"	66"	60"	PMX-20-66	9.8
1 3/8"	22"	16"	PMX-22-22	4.1
1 3/8"	32"	26"	PMX-22-32	5.9
1 3/8"	42"	36"	PMX-22-42	7.6
1 3/8"	54"	48"	PMX-22-54	9.2
1 3/8"	66"	60"	PMX-22-66	11.1
1 1/2"	14"	8"	PMX-24-14	2.9
1 1/2"	22"	16"	PMX-24-22	4.8
1 1/2"	32"	26"	PMX-24-32	7.1
1 1/2"	42"	36"	PMX-24-42	8.9
1 1/2"	54"	48"	PMX-24-54	10.8
1 1/2"	66"	60"	PMX-24-66	13.1

HAMMER BITS – SPLINE SHANK



SINGLE CUTTER

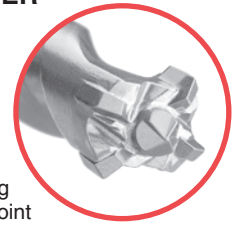
POINT DIA.	OVERALL LENGTH	DRILLING DEPTH	PART NO.	WT. (lbs)
3/8"	10"	4"	202-6-10	0.8
3/8"	14"	8"	202-6-14	0.8
3/8"	18"	12"	202-6-18	0.9
7/16"	14"	8"	202-7-14	0.8
1/2"	14"	8"	202-8-14	1.0
1/2"	18"	12"	202-8-18	1.1
1/2"	22"	16"	202-8-22	1.2
1/2"	28"	22"	202-8-28	1.4
1/2"	42"	36"	202-8-42	1.9
1/2"	54"	48"	202-8-54	2.2
1/2"	66"	60"	202-8-66	2.7
9/16"	14"	8"	202-9-14	1.0
9/16"	18"	12"	202-9-18	1.1
9/16"	22"	16"	202-9-22	1.3
9/16"	28"	22"	202-9-28	1.5
5/8"	14"	8"	202-10-14	1.1
5/8"	18"	12"	202-10-18	1.3
5/8"	22"	16"	202-10-22	1.4
5/8"	28"	22"	202-10-28	1.6
11/16"	14"	8"	202-11-14	1.1
11/16"	22"	16"	202-11-22	1.6
3/4"	14"	8"	202-12-14	1.2
3/4"	18"	12"	202-12-18	1.5
3/4"	22"	16"	202-12-22	1.8
3/4"	28"	22"	202-12-28	2.0
13/16"	14"	8"	202-13-14	1.3
13/16"	22"	16"	202-13-22	1.9
27/32"	14"	8"	202-13A-14	1.3
27/32"	22"	16"	202-13A-22	1.9
7/8"	14"	8"	202-14-14	1.4
7/8"	18"	12"	202-14-18	1.8
7/8"	22"	16"	202-14-22	2.1
7/8"	28"	22"	202-14-28	2.6
1"	14"	8"	202-16-14	1.7
1"	18"	12"	202-16-18	2.2
1"	22"	16"	202-16-22	2.6
1"	28"	22"	202-16-28	3.1
1 1/8"	14"	8"	202-18-14	1.9
1 1/8"	22"	16"	202-18-22	3.1
1 1/8"	28"	22"	202-18-28	3.9
1 1/4"	14"	8"	202-20-14	2.3
1 1/4"	22"	16"	202-20-22	3.6
1 1/4"	28"	22"	202-20-28	4.3
1 3/8"	22"	16"	202-22-22	4.1
1 1/2"	14"	8"	202-24-14	2.9
1 1/2"	22"	16"	202-24-22	4.8
1 1/2"	28"	22"	202-24-28	6.2

If longer lengths are needed, please contact the factory to place a special order.



MULTIPLE CUTTER

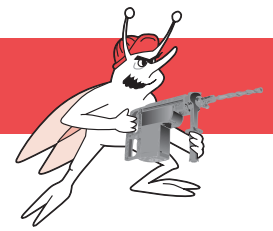
PYRAMID POINT®



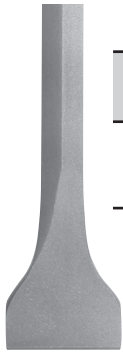
- Patented, new technology tip
- 5 Premium-grade carbide inserts
- Faster smoother drilling and longer lasting
- Precise hole location, easy start center point
- Heat-treated, shot-peened, superior steel
- Ultra-efficient dust removal flute design
- Available in longer lengths; call factory for a quote
- 42", 54", & 66" bits have 31" flute length and undercut body

POINT DIA.	OVERALL LENGTH	DRILLING DEPTH	PART NO.	WT. (lbs)
5/8"	14"	8"	P202-10-14	1.1
5/8"	18"	12"	P202-10-18	1.3
5/8"	22"	16"	P202-10-22	1.4
5/8"	32"	26"	P202-10-32	1.8
5/8"	42"	36"	P202-10-42	2.3
5/8"	54"	48"	P202-10-54	2.8
5/8"	66"	60"	P202-10-66	3.4
3/4"	14"	8"	P202-12-14	1.2
3/4"	18"	12"	P202-12-18	1.5
3/4"	22"	16"	P202-12-22	1.8
3/4"	32"	26"	P202-12-32	2.3
3/4"	42"	36"	P202-12-42	2.9
3/4"	54"	48"	P202-12-54	3.5
3/4"	66"	60"	P202-12-66	4.5
7/8"	14"	8"	P202-14-14	1.4
7/8"	18"	12"	P202-14-18	1.8
7/8"	22"	16"	P202-14-22	2.1
7/8"	32"	26"	P202-14-32	3.0
7/8"	42"	36"	P202-14-42	3.7
7/8"	54"	48"	P202-14-54	4.6
7/8"	66"	60"	P202-14-66	5.6
1"	14"	8"	P202-16-14	1.7
1"	18"	12"	P202-16-18	2.2
1"	22"	16"	P202-16-22	2.6
1"	32"	26"	P202-16-32	3.6
1"	42"	36"	P202-16-42	4.6
1"	54"	48"	P202-16-54	5.8
1"	66"	60"	P202-16-66	6.7
1 1/8"	14"	8"	P202-18-14	1.9
1 1/8"	22"	16"	P202-18-22	3.1
1 1/8"	32"	26"	P202-18-32	4.2
1 1/8"	42"	36"	P202-18-42	5.4
1 1/8"	54"	48"	P202-18-54	6.6
1 1/8"	66"	60"	P202-18-66	8.0
1 1/4"	14"	8"	P202-20-14	2.3
1 1/4"	22"	16"	P202-20-22	3.6
1 1/4"	32"	26"	P202-20-32	5.1
1 1/4"	42"	36"	P202-20-42	6.4
1 1/4"	54"	48"	P202-20-54	8.1
1 1/4"	66"	60"	P202-20-66	9.8
1 3/8"	22"	16"	P202-22-22	4.1
1 3/8"	32"	26"	P202-22-32	5.8
1 3/8"	42"	36"	P202-22-42	7.6
1 3/8"	54"	48"	P202-22-54	9.2
1 3/8"	66"	60"	P202-22-66	11.1
1 1/2"	14"	8"	P202-24-14	2.9
1 1/2"	22"	16"	P202-24-22	4.8
1 1/2"	32"	26"	P202-24-32	7.1
1 1/2"	42"	36"	P202-24-42	8.9
1 1/2"	54"	48"	P202-24-54	10.8
1 1/2"	66"	60"	P202-24-66	13.1

FORGED HAMMER TOOLS



SCALING CHISELS



- Removing scale, rust and concrete spatter

Shank Style	Description	Part No.	Wt. (lbs)
SPLINE*	12" OAL X 2"	SC-12S	1.6
	12" OAL X 3"	SC-312S	2.3
	18" OAL X 2"	SC-18S	2.4
SDS-max	12" OAL X 2"	SC-12MX	1.6
	12" OAL x 3"	SC-312MX	2.5
	18" OAL X 2"	SC-18MX	2.4
	18" OAL X 3"	SC-318MX	2.3
	24" OAL X 2"	SC-24MX	2.6
	36" OAL X 2"	SC-36MX	4.0
SDS+	10" OAL X 1 1/2"	SC-12DS	0.8
3/4" Hex	12" OAL X 2"	SC-12HX	1.6
	12" OAL X 3"	SC-312HX	2.5

COLD CHISELS



- Edging, chipping and channeling concrete, masonry or brick

Shank Style	Description	Part No.	Wt. (lbs)
SPLINE*	12" OAL X 1"	CC-12S	1.4
	18" OAL X 1"	CC-18S	2.3
SDS-max	12" OAL X 1"	CC-12MX	1.4
	18" OAL X 1"	CC-18MX	2.3
	24" OAL X 1"	CC-24MX	2.6
	36" OAL X 1"	CC-36MX	3.8
SDS+	10" OAL X 3/4"	CC-12DS	0.8
3/4" Hex	12" OAL X 1"	CC-12HX	1.4
	18" OAL X 1"	CC-18HX	2.3

BULL POINTS or MOIL POINTS



- Breaking up concrete, brick, asphalt, etc.
- Light demolition applications
- Starting holes in concrete slabs

Shank Style	Description	Part No.	Wt. (lbs)
SPLINE*	12" OAL	BP-12S	1.4
	18" OAL	BP-18S	2.3
SDS-max	12" OAL	BP-12MX	1.4
	18" OAL	BP-18MX	2.3
	24" OAL	BP-24MX	2.6
	36" OAL	BP-36MX	3.9
SDS+	12" OAL	BP-12DS	0.8

CLAY SPADE



- Digging clay, dirt, hard-packed gravel, shale, etc.

Shank Style	Description	Part No.	Wt. (lbs)
SPLINE*	4 1/2" X 5 1/2" X 15 1/2"	CS-S	4.8
SDS-max	4 1/2" X 5 1/2" X 15 1/2"	CS-MX	4.2

ASPHALT CUTTER



- Cutting asphalt or hard ground – not for concrete

Shank Style	Description	Part No.	Wt. (lbs)
SDS-max	3 1/2" X 4 1/2" X 15 1/2"	AC-MX	4.3

FLOOR SCRAPER

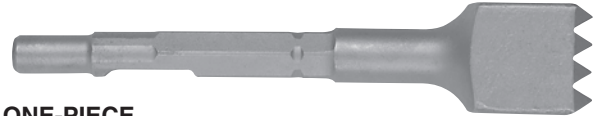


- Removing ceramic tile, linoleum, adhesives, and paint

Shank Style	Description	Part No.	Wt. (lbs)
SDS-max	6" Blade X 25" OAL	FS-625MX	5.5

BUSHING TOOLS

- Roughing concrete surface prior to applying a surface finish



ONE-PIECE

SHANK STYLE	DESCRIPTION	PART NO.	WT. (lbs)
SPLINE*	1 pc Bushing Tool	BT-16S	2.6
SDS-max	1 pc Bushing Tool	BT-16MX	2.6

Carbide bushing tool head is 1 1/2" x 1 1/2"



TWO-PIECE

SHANK STYLE	DESCRIPTION	PART NO.	WT. (lbs)
SPLINE*	Bushing Head Shk	BS-8S	1.0
SDS-max	Bushing Head Shk	BS-8MX	1.0
	16 Pt Bushing Head	BH-16	1.1

Bushing tool head is 1 1/2" x 1 1/2"

CARBIDE BUSHING TOOLS (ONE-PIECE)



SHANK STYLE	DESCRIPTION	PART NO.	WT. (lbs)
SPLINE*	1 pc Bushing Tool	BT-16CS	3.0
SDS-max	1 pc Bushing Tool	BT-16CMX	3.0

Carbide Bushing Tools have 16 carbide points

Carbide bushing tool head is 1 1/2" x 1 1/2"

GROUND ROD DRIVERS



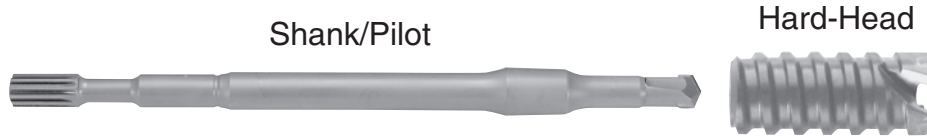
- Driving electrical grounding rods into earth

SHANK STYLE	DESCRIPTION	PART NO.	WT. (lbs)
SPLINE*	for 5/8" - 3/4" rebar	DR-S	1.1
SDS-max	for 5/8" - 3/4" rebar	DR-MX	1.1

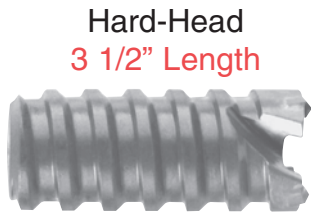
* Please note! Spline Shank Hammer Iron will not have Splines on the Shank.

SOLID-BODY "HARD-HEAD" BITS

Relton's "Hard-Head" bits are designed to bore large holes through concrete without the need to break out the core every few inches.

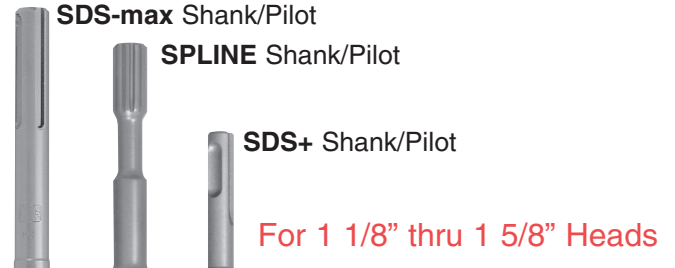


Slide the taper end of the shank into the "Hard-Head" bit. A slight twisting motion will help keep the bit from falling off before beginning the cut. The pilot is integrated on the shank, so drilling can be accomplished without interruption! Once used, shank and head become one piece.



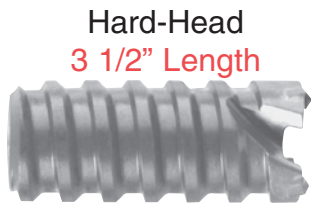
Head-only
1 1/8" thru 1 5/8"

DIAMETER	PART NO.	WEIGHT (lbs)
1 1/8"	SB-18	0.7
1 1/4"	SB-20	0.8
1 1/2"	SB-24	1.3
1 5/8"	SB-26	1.4



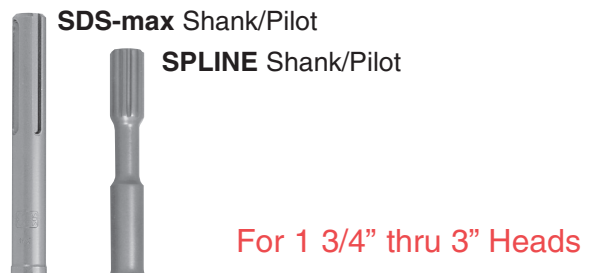
DRILLING DEPTH	SHANK STYLE	PART NO.	WEIGHT (lbs)
10"	SPLINE	S02-10S	1.8
	SDS-max	SMX-10S	1.7
	SDS+	S07-10S	0.9
18"	SPLINE	S02-18S	3.1
	SDS-max	SMX-18S	2.7
	SDS+	S07-18S	1.5
24"	SPLINE	S02-24S	3.9
	SDS-max	SMX-24S	3.6
	SDS+	S07-24S	1.9

Additional sizes available upon request.



Head-only
1 3/4" thru 3"

DIAMETER	PART NO.	WEIGHT (lbs)
1 3/4"	SB-28	1.4
2"	SB-32	1.9
2 1/2"	SB-40	3.4
3"	SB-48	5.4



DRILLING DEPTH	SHANK STYLE	PART NO.	WEIGHT (lbs)
10"	SPLINE	S02-10	2.4
	SDS-max	SMX-10	2.4
18"	SPLINE	S02-18	3.8
	SDS-max	SMX-18	3.8
24"	SPLINE	S02-24	4.8
	SDS-max	SMX-24	4.8

Additional sizes available upon request.

IMPORTANT INFORMATION

Once Relton's "Hard-Head" bits have been used, the tapered shank cannot be removed by conventional means. For shank removal, return to Relton Corporation.

HAMMER CORE BITS

CORE BODIES & STARTER POINTS



DIAMETER	PART NO.	WEIGHT (lbs)
1 3/4"	CBT-28	2.1
2"	CBT-32	2.7
2 1/2"	CBT-40	4.0
2 3/4"	CBT-44	4.5
3"	CBT-48	5.4
3 1/2"	CBT-56	7.0
4"	CBT-64	8.6
4 1/2"	CBT-72	10.1
5"	CBT-80	12.7

SHANKS



SDS-max SHANK

DRILLING DEPTH	PART NO.	WEIGHT (lbs)
10"	SMXTL-10	1.8
18"	SMXTL-18	3.2
24"	SMXTL-24	4.3



SPLINE SHANK

DRILLING DEPTH	PART NO.	WEIGHT (lbs)
10"	S02TL-10	1.8
18"	S02TL-18	3.2
24"	S02TL-24	4.3

REPLACEMENT PARTS



CORE BODIES ONLY

DIAMETER	PART NO.	WEIGHT (lbs)
1 3/4"	CBT-28HO	1.8
2"	CBT-32HO	2.4
2 1/2"	CBT-40HO	3.7
2 3/4"	CBT-44HO	4.4
3"	CBT-48HO	4.9
3 1/2"	CBT-56HO	6.3
4"	CBT-64HO	7.8
4 1/2"	CBT-72HO	9.3
5"	CBT-80HO	11.2



STARTER POINTS ONLY

DIAMETER	PART NO.	WEIGHT (lbs)
1 3/4"	CBSP-28	0.4
2"	CBSP-32	0.6
2 1/2"	CBSP-40	0.6
2 3/4"	CBSP-44	0.8
3"	CBSP-48	0.9
3 1/2"	CBSP-56	0.9
4"	CBSP-64	0.9
4 1/2"	CBSP-72	1.1
5"	CBSP-80	1.1

3 Components... (Once the hammer core bit has been used, the shank and core bit become a one-piece system)

1. TAPER FIT SHANK



SPLINE or SDS-max Shank
(other shank styles & lengths
available on request)

2. HEAVY-DUTY CORE BIT



6" Body Length
4-1/2" Core Depth
Carbide teeth can be replaced or sharpened.

3. STARTER POINT



Heat-Treated, Spring-Loaded

- No stress points • Easy pilot removal
- Tapered Shank • No knock-out hole for pilot
- Extra-thick core body wall • Extra-length core body • Core Bits milled from solid steel
- Can be used wet or dry

STRAIGHT-SHANK MASONRY DRILL BITS



ROTARY/PERCUSSION R4X™ MASONRY BITS

The special cold-forged process used to produce R4X™ Bits produces a drill of exceptional strength at a reduced cost.

DIAMETER		OVERALL LENGTH	DRILLING DEPTH	PART NO.	WT. (lbs)
POINT	SHANK				
1/8"	1/8"	3"	1 3/4"	RX-2-3*	0.1
5/32"	3/16"	4"	2 3/8"	RX-1-4	0.1
3/16"	3/16"	4"	2 1/2"	RX-3-4*	0.1
1/4"	1/4"	4"	2 1/2"	RX-4-4*	0.1
1/4"	1/4"	6"	4"	RX-4-6*	0.1
1/4"	1/4"	12"	10"	RX-4-12	0.2
5/16"	1/4"	4"	2 1/2"	RX-5-4*	0.1
5/16"	1/4"	6"	4"	RX-5-6*	0.1
5/16"	1/4"	12"	10"	RX-5-12	0.2
3/8"	1/4"	4"	2 1/2"	RX-6-4*	0.1
3/8"	1/4"	6"	4"	RX-6-6*	0.1
3/8"	3/8"	12"	10"	RX-6-12	0.3
7/16"	1/4"	6"	4"	RX-7-6	0.2
1/2"	1/4"	4"	2 1/2"	RX-8-4*	0.2
1/2"	3/8"	6"	4"	RX-8-6*	0.3
1/2"	3/8"	12"	10"	RX-8-12	0.4
9/16"	3/8"	6"	4"	RX-9-6	0.3
5/8"	1/2"	6"	4"	RX-10-6	0.3
5/8"	1/2"	12"	10"	RX-10-12	0.6
3/4"	1/2"	6"	4"	RX-12-6	0.4
3/4"	1/2"	12"	10"	RX-12-12	0.9
7/8"	1/2"	6"	4"	RX-14-6	0.6
7/8"	1/2"	12"	10"	RX-14-12	1.1
1"	1/2"	6"	4"	RX-16-6	0.7
1"	1/2"	12"	10"	RX-16-12	1.4

*** 25 pc. quantities available in bulk packaging**

To order bulk, use prefix "B" before part number. Example: **BRX-8-6**

ROTARY-ONLY TIP-TOP™ FAST SPIRAL MASONRY BITS

For the professional or the home-user, TIP-TOP™ bits are recommended for drilling in all types of masonry.

The fast spiral and the special carbide cutter assure fast penetration with minimal pressure.

DIAMETER		OVERALL LENGTH	DRILLING DEPTH	PART NO.	Wt. (lbs)
POINT	SHANK				
1/8"	1/8"	3"	1 3/4"	TT-2-3	0.1
3/16"	3/16"	4"	2 1/2"	TT-3-4	0.1
1/4"	1/4"	4"	2 1/2"	TT-4-4	0.1
1/4"	1/4"	6"	4"	TT-4-6	0.1
1/4"	1/4"	12"	10"	TT-4-12	0.3
1/4"	1/4"	18"	16"	TT-4-18	0.3
5/16"	1/4"	4"	2 1/2"	TT-5-4	0.1
5/16"	1/4"	6"	4"	TT-5-6	0.1
5/16"	5/16"	18"	16"	TT-5-18	0.4
3/8"	1/4"	4"	2 1/2"	TT-6-4	0.1
3/8"	1/4"	6"	4"	TT-6-6	0.1
3/8"	3/8"	18"	16"	TT-6-18	0.6
3/8"	1/4"	24"	22"	TT-6-24	0.8
7/16"	1/4"	6"	4"	TT-7-6	0.2
1/2"	1/4"	4"	2 1/2"	TT-8-4	0.2
1/2"	3/8"	6"	4"	TT-8-6	0.3
1/2"	1/4"	6"	4"	TT-8-6A	0.3
9/16"	3/8"	6"	4"	TT-9-6	0.3
5/8"	1/2"	6"	4"	TT-10-6	0.3
11/16"	1/2"	6"	4"	TT-11-6	0.4
3/4"	1/2"	6"	4"	TT-12-6	0.4
7/8"	1/2"	6"	4"	TT-14-6	0.8
1"	1/2"	6"	4"	TT-16-6	0.7

STRAIGHT-SHANK MASONRY DRILL BITS

DIAMETER		OVERALL LENGTH	DRILLING DEPTH	PART NO.	Wt. (lbs)
POINT	SHANK				
1/8"	1/8"	3"	1 7/8"	RT-2-3*	0.1
5/32"	3/16"	4"	2 3/8"	RT-1-4	0.1
11/64"	11/64"	3"	1 7/8"	RT-1-3*	0.1
3/16"	3/16"	3"	1 7/8"	RT-3-3*	0.1
3/16"	3/16"	4"	2 3/8"	RT-3-4*	0.1
3/16"	3/16"	6"	4 1/2"	RT-3-6*	0.1
3/16"	3/16"	8"	6"	RT-3-8*	0.1
7/32"	1/4"	6"	4"	RT-2-6	0.1
7/32"	1/4"	8 1/2"	6 1/2"	RT-2-8*	0.1
1/4"	1/4"	4"	2 1/4"	RT-4-4*	0.1
1/4"	1/4"	6"	3 3/4"	RT-4-6*	0.1
1/4"	1/4"	8"	6"	RT-4-8*	0.1
1/4"	1/4"	12"	10"	RT-4-12	0.2
1/4"	1/4"	18"	16"	RT-4-18	0.3
1/4"	1/4"	24"	22"	RT-4-24	0.4
5/16"	1/4"	4"	2 1/2"	RT-5-4*	0.1
5/16"	1/4"	6"	4"	RT-5-6*	0.1
5/16"	1/4"	12"	10"	RT-5-12	0.3
5/16"	1/4"	18"	16"	RT-5-18	0.4
3/8"	3/8"	4"	2 1/2"	RT-6-4*	0.2
3/8"	1/4"	4"	2 1/2"	RT-6-4A	0.1
3/8"	3/8"	6"	4"	RT-6-6*	0.2
3/8"	1/4"	6"	4"	RT-6-6A*	0.2
3/8"	3/8"	12"	10"	RT-6-12	0.4
3/8"	3/8"	18"	16"	RT-6-18	0.5
3/8"	3/8"	24"	22"	RT-6-24	0.7
7/16"	3/8"	4"	2 1/2"	RT-7-4*	0.2
7/16"	3/8"	6"	4"	RT-7-6*	0.3
7/16"	3/8"	18"	16"	RT-7-18	0.6
1/2"	3/8"	4"	2 1/2"	RT-8-4*	0.2
1/2"	3/8"	6"	4"	RT-8-6*	0.3
1/2"	1/4"	6"	4"	RT-8-6A*	0.3
1/2"	3/8"	14"	12"	RT-8-14	0.6
1/2"	3/8"	18"	16"	RT-8-18	0.7
1/2"	3/8"	24"	22"	RT-8-24	0.9
9/16"	3/8"	6"	4"	RT-9-6*	0.3
5/8"	1/2"	6"	4"	RT-10-6*	0.4
5/8"	1/2"	14"	12"	RT-10-14	0.8
5/8"	1/2"	18"	16"	RT-10-18	1.1
5/8"	1/2"	24"	22"	RT-10-24	1.3
11/16"	1/2"	6"	4"	RT-11-6*	0.4
3/4"	1/2"	6"	4"	RT-12-6*	0.5
3/4"	1/2"	14"	12"	RT-12-14	1.0
3/4"	1/2"	18"	16"	RT-12-18	1.5
3/4"	1/2"	24"	22"	RT-12-24	1.8
7/8"	1/2"	6"	4"	RT-14-6	0.6
7/8"	1/2"	14"	12"	RT-14-14	1.3
1"	1/2"	6"	4"	RT-16-6	0.8
1"	1/2"	18"	16"	RT-16-18	2.4
1"	1/2"	24"	22"	RT-16-24	3.1



ROTARY/PERCUSSION

RAM TIP™

PROFESSIONAL MASONRY BITS

Relton's **premium** straight-shank masonry bit is designed for use in lightweight, rotating-vibrating hammers, but it can be used equally well in standard drill motors as a rotary bit.

A special hard, tough carbide cutter is precisely located for maximum support and strength.

Shank diameters 3/8" and larger have 3 flats on the shank to reduce the possibility of slipping in the chuck.

All RT bits are available in GRT® style, See page 13 for additional information.

RAM TIP™ STRAIGHT SHANK 5-PIECE BIT KIT



Refillable Case
Contains 1 of each:
• RT-3-6 • RT-6-6
• RT-4-6 • RT-8-6
• RT-5-6

RAM-TIP™

PART NO.	WT. (lbs)
RT-K5	0.7

*** 25 pc. quantities available in bulk packaging**
To order bulk, use prefix "B" before part number. Example: **BRT-8-6**



STRAIGHT-SHANK MASONRY DRILL BITS



Groo-V Tip®
multi-purpose bit

tile† • hard metal • plastic • wood • marble† • granite† • masonry

DIAMETER		OVERALL LENGTH	DRILLING DEPTH	PART NO.	WEIGHT (lbs)
POINT	SHANK				
1/8"	1/8"	3"	1 7/8"	GRT-2-3*	0.1
5/32"	3/16"	4"	2 3/8"	GRT-1-4*	0.1
11/64"	11/64"	3"	1 7/8"	GRT-1-3	0.1
3/16"	3/16"	3"	1 7/8"	GRT-3-3*	0.1
3/16"	3/16"	4"	2 3/8"	GRT-3-4*	0.1
3/16"	3/16"	6"	4 1/2"	GRT-3-6*	0.1
3/16"	3/16"	8"	6"	GRT-3-8*	0.1
7/32"	1/4"	6"	4"	GRT-2-6	0.1
1/4"	1/4"	4"	2 1/4"	GRT-4-4*	0.1
1/4"	1/4"	6"	3 3/4"	GRT-4-6*	0.1
1/4"	1/4"	8"	6"	GRT-4-8*	0.1
5/16"	1/4"	4"	2 1/2"	GRT-5-4*	0.1
5/16"	1/4"	6"	4"	GRT-5-6*	0.2
3/8"	3/8"	4"	2 1/2"	GRT-6-4*	0.1
3/8"	3/8"	6"	4"	GRT-6-6*	0.2
3/8"	3/8"	12"	10"	GRT-6-12	0.3
7/16"	3/8"	4"	2"	GRT-7-4	0.1
7/16"	3/8"	6"	4"	GRT-7-6	0.3
1/2"	3/8"	6"	4"	GRT-8-6*	0.3
9/16"	3/8"	6"	4"	GRT-9-6	0.4
5/8"	1/2"	6"	4"	GRT-10-6	0.4
11/16"	1/2"	6"	4"	GRT-11-6	0.4
3/4"	1/2"	6"	4"	GRT-12-6	0.5
7/8"	1/2"	6"	4"	GRT-14-6	0.6
1"	1/2"	6"	4"	GRT-16-6	0.8

Percussion or rotary-only, the Groo-V Tip® bit makes holes in almost *all* materials! Engineered for drilling hard materials, these specialized Ram Tip™ Bits have a *ser-rated* carbide tip, which penetrates faster - up to *50% faster* than standard masonry bits! (A drill-press-supported drill motor is recommended for drilling hard metal.)

Groo-V Tip® MULTI-PURPOSE 5-PIECE BIT KIT



Refillable Case
Contains 1 of each:
• GRT-3-6 • GRT-6-6
• GRT-4-6 • GRT-8-6
• GRT-5-6

Groo-V Tip®

PART NO.	WT. (lbs)
GRT-K5	0.7

Groo-V Tip® and GRT® are registered trademarks of Relton Corporation

†Because of the differing densities of these materials, the number of holes may vary. Slow drilling speeds are recommended, and in some cases, marble and granite may not be drillable with carbide tools.

* 25 pc. quantities available in bulk packaging

To order bulk, use prefix "B" before part number.
Example: **BGRT-3-6**

SCREW-TYPE ANCHOR BITS



TC bits meet or exceed all specifications established by manufacturers of screw-type masonry anchors.

Recommended for use with Tapcon® anchors or other screw-type anchors requiring 5/32" or 3/16" tip diameters.

FOR THESE ANCHORS	USE THESE SIZE RELTON SCREW-TYPE MASONRY BIT	PART NO.	Wt. (lbs)	
			TUBE	BULK
3/16" X 1 1/4" 3/16" X 1 3/4"	5/32" DIA X 3-1/2" LGTH	TC-5-3	0.3	3
3/16" X 2 1/4" 3/16" X 2 3/4"	5/32" DIA X 4-1/2" LGTH	TC-5-4	0.3	3
3/16" X 3 1/4" 3/16" X 3 3/4" 3/16" X 4"	5/32" DIA X 5-1/2" LGTH	TC-5-5	0.3	3
1/4" X 1 1/4" 1/4" X 1 3/4"	3/16" DIA X 3-1/2" LGTH	TC-3-3	0.3	3
1/4" X 2 1/4" 1/4" X 2 3/4"	3/16" DIA X 4-1/2" LGTH	TC-3-4	0.3	3
1/4" X 3 1/4" 1/4" X 3 3/4" 1/4" X 4"	3/16" DIA X 5-1/2" LGTH	TC-3-5	0.3	3

ALL RELTON TC BITS ARE PACKED 10 PER TUBE

BULK QTY 100 PER SIZE

All TC size are available in 100 pc. bulk packaging

To order bulk, use prefix "B" before part number Example: **BTC-3-5**

ROTARY REBAR CUTTER



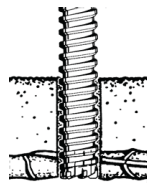
ROTARY-ONLY REBAR CUTTERS

Easy As...

1. When rebar is encountered while drilling, immediately stop and remove the bit from the hole.



2. Mount a rotary rebar cutter in a standard 1/2" drill motor or SDS+ rotary hammer motor (**on rotary-only setting**), and drill through embedded rebar.



3. Once rebar has been drilled through, remove the rebar cutter, and continue drilling using the masonry bit.



NOTICE:

The Relton carbide-tipped rotary rebar cutter is designed for use in a standard 1/2" chuck/drill motor or SDS+ hammer motor provided the selector mechanism is kept in the **rotary-only position**. The Relton carbide-tipped rotary rebar cutter is intended for **rotary** drilling only; percussion (hammering action) will damage the tool.

ALL REBAR CUTTERS ARE DESIGNED FOR ROTARY-ONLY OPERATION

SAFETY NOTE:

The operator of this tool assumes sole responsibility for any adverse structural effects of cutting rebar. Consult structural engineers if you have any concerns.

One-piece (Fixed Shank)

1/2" Straight Shank



SDS+ Shank



DIA.	OVERALL LENGTH	PART NUMBER		WT. (lbs)	SUGGESTED RPM'S
		STRAIGHT SHANK	SDS+ SHANK		
3/8"	8"	RB-6	SRB-6	0.3	850-1200
3/8"	12"	RB-6-12	SRB-6-12	0.3	850-1200
3/8"	18"	RB-6-18	SRB-6-18	0.5	850-1200
7/16"	12"	RB-7	SRB-7	0.5	850-1200
1/2"	12"	RB-8	SRB-8	0.6	850-1200
1/2"	18"	RB-8-18	SRB-8-18	1.0	850-1200
9/16"	12"	RB-9	SRB-9	0.7	850-1200
9/16"	18"	RB-9-18	SRB-9-18	1.1	850-1200
5/8"	12"	RB-10	SRB-10	0.8	750-1000
5/8"	18"	RB-10-18	SRB-10-18	1.3	750-1000
11/16"	12"	RB-11	SRB-11	0.9	600-850
3/4"	12"	RB-12	SRB-12	1.1	600-850
3/4"	18"	RB-12-18	SRB-12-18	1.6	600-850
3/4"	24"	RB-12-24	SRB-12-28	1.8	600-850
13/16"	12"	RB-13	SRB-13	1.1	600-850

Two-piece (Removable Shank + Head)

1/2" Straight Shank



SDS+ Shank



DIA.	OVERALL LENGTH	PART NUMBER		WT. (lbs)	SUGGESTED RPM'S
		STRAIGHT SHANK	SDS+ SHANK		
7/8"	12"	RB-14	SRB-14	0.9	600-850
1"	12"	RB-16	SRB-16	1.1	500-750
1-1/8"	12"	RB-18	SRB-18	1.2	500-750
1-1/4"	12"	RB-20	SRB-20	1.3	450-600
1-3/8"	12"	RB-22	SRB-22	1.4	450-600
1-1/2"	12"	RB-24	SRB-24	1.6	350-500
1-5/8"	12"	RB-26	SRB-26	1.7	350-500
1-3/4"	12"	RB-28	SRB-28	1.8	350-500
2"	12"	RB-32	SRB-32	2.5	350-500
2-1/2"	12"	RB-40	SRB-40	3.1	350-500

The above **two-piece systems** come with shanks to make an **overall length of 12"**; however, longer or shorter shanks are available. The head may also be purchased separately...see below.

SHANK ONLY - 7/8" DIA. & LARGER

1/2" Straight Shank



SDS+ Shank



PART NO.		LENGTH	W/ HEAD	WT. (lbs)	THREAD SIZE
STRAIGHT	SDS+				
TDS-2-9	STDS-2-9	5"	9"	0.4	1/2-13 MALE
TDS-2-12*	STDS-2-12*	8"	12"	0.5	1/2-13 MALE
TDS-2-18	STDS-2-18	14"	18"	0.9	1/2-13 MALE
TDS-2-24	STDS-2-24	20"	24"	1.2	1/2-13 MALE
TDS-3-9	STDS-3-9	5"	9"	0.4	3/4-10 MALE
TDS-3-12*	STDS-3-12*	8"	12"	0.5	3/4-10 MALE
TDS-3-18	STDS-3-18	14"	18"	0.9	3/4-10 MALE
TDS-3-24	STDS-3-24	20"	24"	1.2	3/4-10 MALE

* Supplied with complete bit.

CUSTOM LENGTH SHANKS CAN BE MANUFACTURED
Straight Shank available up to 96" and SDS+ Shank up to 48"

CUTTER HEAD ONLY - 7/8" DIA. & LARGER

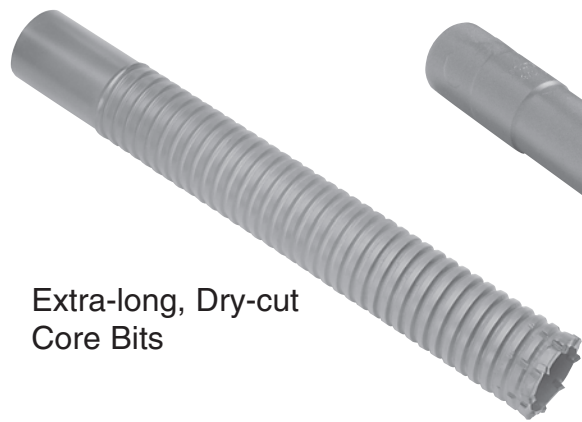


DIA.	PART NO.	WT. (lbs)	RPM'S	THREAD SIZE
7/8"	RB-14HO	0.9	600-850	1/2-13 FEMALE
1"	RB-16HO	1.1	500-750	1/2-13 FEMALE
1-1/8"	RB-18HO	1.2	500-750	1/2-13 FEMALE
1-1/4"	RB-20HO	1.3	450-600	1/2-13 FEMALE
1-3/8"	RB-22HO	1.4	450-600	1/2-13 FEMALE
1-1/2"	RB-24HO	1.6	350-500	1/2-13 FEMALE
1-5/8"	RB-26HO	1.7	350-500	1/2-13 FEMALE
1-3/4"	RB-28HO	1.8	350-500	1/2-13 FEMALE
2"	RB-32HO	2.5	350-500	3/4-10 FEMALE
2-1/2"	RB-40HO	3.1	350-500	3/4-10 FEMALE

When ordering components, be sure to match thread sizing. The RB-32HO and RB-40HO require shanks with 3/4-10 MALE threads.

SPECIALTY CARBIDE BITS

Relton can manufacture special diameters and lengths for most of our products. We will manufacture custom designs to your blueprints or other specifications, even in 1 piece quantities. If you don't see what you need, just ask us to make it for you!



Extra-long, Dry-cut Core Bits

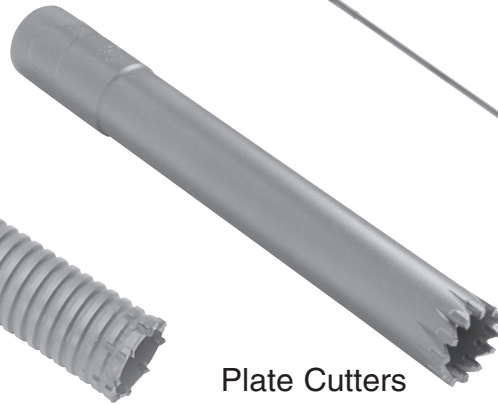
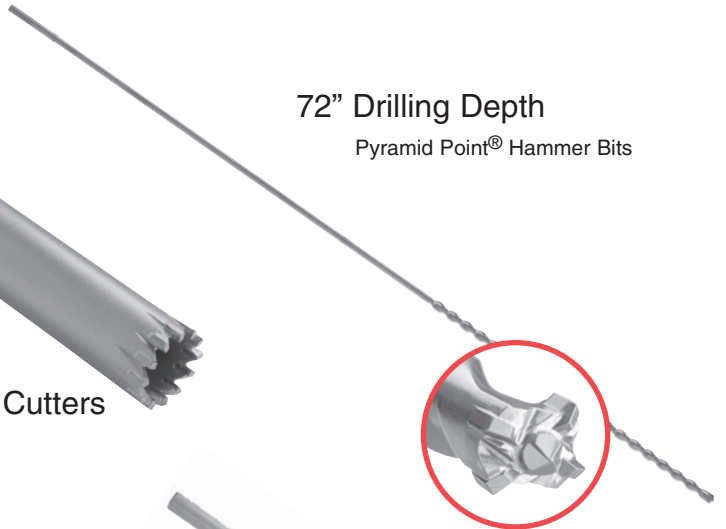
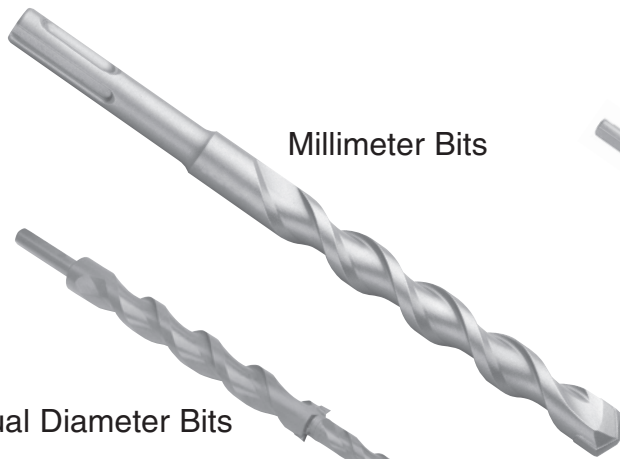


Plate Cutters

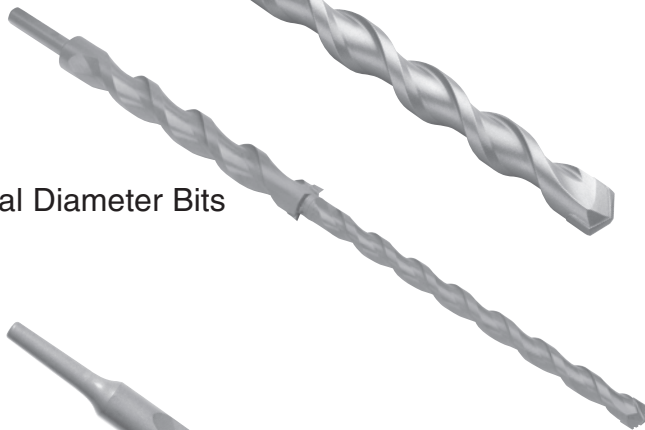


72" Drilling Depth

Pyramid Point® Hammer Bits



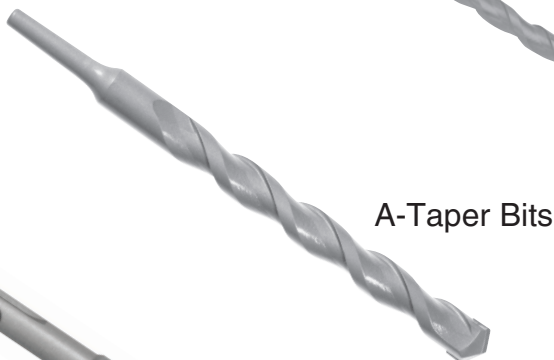
Millimeter Bits



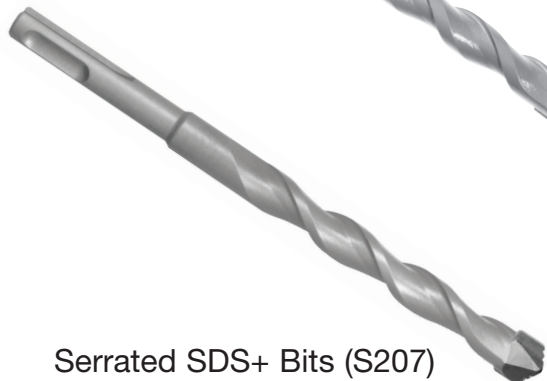
Dual Diameter Bits



Bits for Seismic Retrofit



A-Taper Bits



Serrated SDS+ Bits (S207)

For a free quote, please provide the following information

1. Specify diameter and drilling depth.
2. Specify straight rotary or hammer.
3. Specify core bit or single-insert bit.
4. Specify manufacturer's drill motor model number (if hammer bit).

Example:

"2 1/2" x 10" hammer core bit for Milwaukee 5300"

Send requests to info@relton.com

FACTORY SERVICE

Relton offers a complete rebuilding service for all our Carbide-Tipped Masonry Tools.

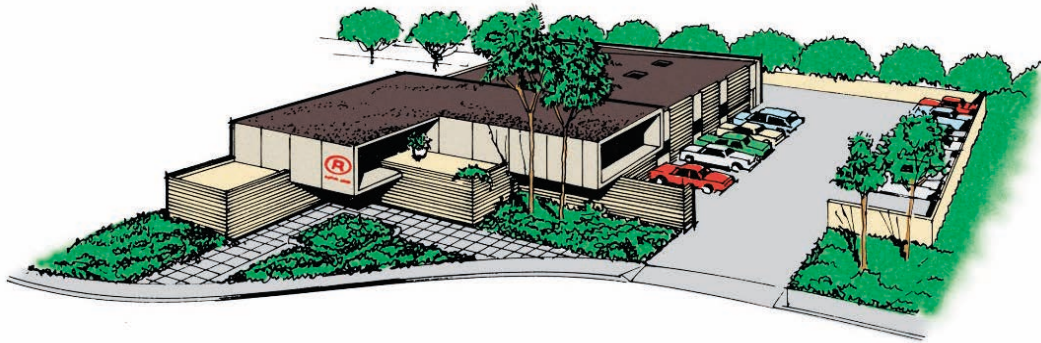
SAVE MONEY WITH RELTON FACTORY SERVICE

In some cases, a dull or broken drill bit or hole saw can be refurbished to cut like new.

- Broken carbide inserts can be replaced
- If the tip is damaged, it can be cut off and a new carbide insert slot can be re-milled
- Note: Pyramid Point® multiple-cutter bits can be re-milled ONLY AS SINGLE-CUTTER BITS.

SEND YOUR DULL OR BROKEN RELTON BITS OR HOLE SAWS TO:

RELTON CORPORATION
317 ROLYN PLACE
ARCADIA, CA 91007-2838



SUGGESTIONS FOR EXTENDING BIT LIFE

1. If possible, avoid hitting rebar or other impenetrable obstacles embedded in the concrete. Rebar is the number one enemy of hammer bits. When rebar is unavoidably encountered, we recommend using our rotary rebar cutter (see page 15).
 2. Once drilling has begun, avoid trying to realign an off-center hole or change directions in a hole.
 3. If the drill bit seems to slow down in its penetration rate, it is usually an indication that the carbide tip is getting dull. Continuing to drill with a dull bit will reduce bit life.
 4. Pouring water into a hole as a dust settler while drilling may cause complete failure of the carbide tip.
 5. Apply enough pressure to keep the bit firmly seated in the hammer.
 6. Do not drill deeper than the length of the flutes. (This suggestion would not apply to multiple-cutter core bits in which the body diameter substantially exceeds the shank diameter.)
 7. Frequent bit withdrawal from the hole will help to clean out dust and lessen the chance of the bit binding in the hole. This is particularly important when drilling damp or soft material.
 8. Excessive force to remove a bound-up bit will cause bending or breakage.
 9. Keep the shank of the bit clean and well lubricated.
 10. Keep each bit in its own container. This will prevent accidental damage through handling while the bit is not being used.
 11. A worn nose-piece in your hammer drill can result in abnormal bit-shank wear.
 12. Before drilling 36" deep or deeper, use a shorter bit to drill a pilot hole 16" to 22".
- NOTE:** Premature bit failure is usually the result of misuse, operator error, or job-site conditions. Pipe-wrench marks on a bit usually indicate bit misuse.

HOLE SAW DIVISION



BRAZED-CARBIDE HOLE SAWS

Hole Saw Systems

Relton has been manufacturing high quality brazed-carbide hole saws in the U.S.A. for over 75 years. Each hole saw has actual carbide teeth brazed into the steel body. Different applications require different hole saws. Each series is engineered to cut a specific material. All can be used dry or wet, hand-held or in a stationary drill. All can be re-sharpened or have teeth replaced as needed. Relton manufactures custom sizes (even in one-piece quantities) in most diameters or drilling depths. For special-order information, please see page 22.

If your job requires a large number of holes, **lower your cost per hole with a Relton hole saw!** If you burn up high-speed hole saws, or if bi-metal hole saws aren't tough enough, Relton is for you.

HARD PLASTIC/STUCCO ISHS SERIES



2" Drilling Depth Standard

Complete Saw includes:

- Hole saw cutter head
- Shank (HS-S4 or HS-S6)
- Pilot (Carbide tipped)
- Spring

Will cut:

Clay Pipe, Hardy Board
Dry Lath & Plaster / Stucco
Wood with Nails
Aluminum Siding
Hard or Composite Plastic

DIAMETER	COMPLETE		CUTTER-HEAD ONLY		REPLACEMENT SHANKS	REPLACEMENT PILOTS/SPRINGS	
	PART NO.	WT. (lbs)	PART NO.	WT. (lbs)	PART NO.	PART NO.	WT. (lbs)
1"	ISHS-16	0.7	ISHS-16HO	0.3	HS-S4 (Supplied w/ complete saw)	CP-42 Carbide-Tipped 1/4" Diameter - 2" DD	0.1
1 1/8"	ISHS-18	0.8	ISHS-18HO	0.4			
1 1/4"	ISHS-20	0.8	ISHS-20HO	0.4			
1 3/8"	ISHS-22	0.8	ISHS-22HO	0.4			
1 1/2"	ISHS-24	1.0	ISHS-24HO	0.5	HS-S47	ES-42 Ejector Spring	0.1
1 5/8"	ISHS-26	1.1	ISHS-26HO	0.6	HS-S410 (See pg. 21 for specs.)		
1 3/4"	ISHS-28	1.1	ISHS-28HO	0.6	HS-S6 (Supplied w/ complete saw)	CP-62 Carbide-Tipped 3/8" Diameter - 2" DD	0.1
2"	ISHS-32	1.1	ISHS-32HO	0.6			
2 1/8"	ISHS-34	1.3	ISHS-34HO	0.6			
2 1/4"	ISHS-36	1.3	ISHS-36HO	0.7			
2 1/2"	ISHS-40	1.4	ISHS-40HO	0.8	HS-S67	ES-62 Ejector Spring	0.1
3"	ISHS-48	1.5	ISHS-48HO	1.1	HS-S610 (See pg. 21 for specs.)		
4"	ISHS-64	2.2	ISHS-64HO	1.8			

• Additional sizes available on request

WOOD/FIBERGLASS FHS SERIES



2" Drilling Depth Standard

Complete Saw includes:

- Hole saw cutter head
- Shank (HS-S4 or HS-S6)
- Pilot (High Speed Steel)
- Spring

Will cut:

Wood/Fiberglass / Kevlar
Plexiglass
PVC / ABS Materials
Composites
Soft Plastic / Acrylic
(Substitute Carbide Pilot)
Drywall

DIAMETER	COMPLETE		CUTTER-HEAD ONLY		REPLACEMENT SHANKS	REPLACEMENT PILOTS/SPRINGS	
	PART NO.	WT. (lbs)	PART NO.	WT. (lbs)	PART NO.	PART NO.	WT. (lbs)
7/8"	FHS-14	0.4	FHS-14HO	0.3	S-12	SP-42 High-Speed Steel 1/4" Diameter - 2" DD	0.1
1"	FHS-16	0.7	FHS-16HO	0.3	HS-S4 (Supplied w/ complete saw)		
1 1/8"	FHS-18	0.8	FHS-18HO	0.3	HS-S47		
1 1/4"	FHS-20	0.8	FHS-20HO	0.4	HS-S410 (See pg. 21 for specs.)		
1 3/8"	FHS-22	0.8	FHS-22HO	0.4	HS-S6 (Supplied w/ complete saw)	SP-62 High-Speed Steel 3/8" Diameter - 2" DD	0.1
1 1/2"	FHS-24	1.0	FHS-24HO	0.5			
1 3/4"	FHS-28	1.1	FHS-28HO	0.6			
2"	FHS-32	1.1	FHS-32HO	0.6			
2 1/8"	FHS-34	1.1	FHS-34HO	0.6	HS-S67	ES-62 Ejector Spring	0.1
2 1/4"	FHS-36	1.3	FHS-36HO	0.7			
2 1/2"	FHS-40	1.4	FHS-40HO	0.7	HS-S610 (See pg. 21 for specs.)	ES-62 Ejector Spring	0.1
2 3/4"	FHS-44	1.5	FHS-44HO	1.1			
3"	FHS-48	1.6	FHS-48HO	1.1			
3 1/2"	FHS-56	1.7	FHS-56HO	1.3			
4"	FHS-64	2.1	FHS-64HO	1.6			

• Additional sizes available on request

BRAZED-CARBIDE HOLE SAWS

METAL-CUTTING HS SERIES



1" Drilling Depth Standard

Complete Saw includes:

- Hole saw cutter-head
- Shank (HS-S4 or HS-S6)
- Pilot (High-Speed Steel)
- Spring

Will cut:

Carbon Steel
Cast Iron
Stainless Steel
Aluminum
Hard Rubber
Titanium
Formica

DIAMETER	COMPLETE		CUTTER-HEAD ONLY		REPLACEMENT SHANKS	REPLACEMENT PILOTS/SPRINGS
	PART NO.	WT. (lbs)	PART NO.	WT. (lbs)	PART NO.	PART NO. WT. (lbs)
11/16"	HS-11	0.4	HS-11HO	0.3	S-12 (See pg. 21 for specs.)	SP-41 0.1 High-Speed Steel 1/4" Diameter - 1" DD
3/4"	HS-12	0.4	HS-12HO	0.3		
13/16"	HS-13	0.4	HS-13HO	0.4		
7/8"	HS-14	0.4	HS-14HO	0.3		
15/16"	HS-15	0.5	HS-15HO	0.3	HS-S4 (Supplied w/ complete saw) HS-S47 HS-S410 (See pg. 21 for specs.)	ES-41 0.1 Ejector Spring
1"	HS-16	0.6	HS-16HO	0.3		
1 1/8"	HS-18	0.7	HS-18HO	0.4		
1 1/4"	HS-20	0.7	HS-20HO	0.4		
1 3/8"	HS-22	0.8	HS-22HO	0.4		
1 1/2"	HS-24	0.9	HS-24HO	0.4		
1 5/8"	HS-26	1.0	HS-26HO	0.5		
1 3/4"	HS-28	1.1	HS-28HO	0.6		
1 7/8"	HS-30	1.1	HS-30HO	0.6		
2"	HS-32	1.1	HS-32HO	0.6		
2 1/8"	HS-34	1.3	HS-34HO	0.7		
2 1/4"	HS-36	1.4	HS-36HO	0.8		
2 3/8"	HS-38	1.4	HS-38HO	0.8		
2 1/2"	HS-40	1.6	HS-40HO	0.8		
2 3/4"	HS-44	1.6	HS-44HO	0.8		
3"	HS-48	1.7	HS-48HO	0.9		
3 1/4"	HS-52	1.9	HS-52HO	1.6		
3 1/2"	HS-56	2.3	HS-56HO	1.9		
4"	HS-64	2.6	HS-64HO	2.2		

• Additional sizes available on request

INTERRUPTED-CUT STHS SERIES



2" Drilling Depth Standard

Complete Saw includes:

- Hole saw cutter head
- Shank (HS-S4 or HS-S6)
- Pilot (High-Speed Steel)
- Spring

Will cut:

Pipe
Trench Duct
Cellular Metal
 - and -

all types of ferrous & non-ferrous metals where an "interrupted" cut may occur

DIAMETER	COMPLETE		CUTTER-HEAD ONLY		REPLACEMENT SHANKS	REPLACEMENT PILOTS/SPRINGS
	PART NO.	WT. (lbs)	PART NO.	WT. (lbs)	PART NO.	PART NO. WT. (lbs)
3/4"	STHS-12	0.4	STHS-12HO	0.3	S-12 (See pg. 21 for specs.)	SP-42 0.1 High-Speed Steel 1/4" Diameter - 2" DD
7/8"	STHS-14	0.5	STHS-14HO	0.3		
1"	STHS-16	0.8	STHS-16HO	0.4	HS-S4 (Supplied w/ complete saw) HS-S47 HS-S410 (See pg. 21 for specs.)	ES-42 0.1 Ejector Spring
1 1/8"	STHS-18	0.8	STHS-18HO	0.4		
1 1/4"	STHS-20	0.8	STHS-20HO	0.5		
1 3/8"	STHS-22	0.9	STHS-22HO	0.5		
1 1/2"	STHS-24	1.1	STHS-24HO	0.6		
1 3/4"	STHS-28	1.3	STHS-28HO	0.8		
2"	STHS-32	1.4	STHS-32HO	0.9		
2 1/4"	STHS-36	1.7	STHS-36HO	1.0		
2 3/8"	STHS-38	1.8	STHS-38HO	1.1		
2 1/2"	STHS-40	1.9	STHS-40HO	1.1		
2 3/4"	STHS-44	1.9	STHS-44HO	1.4		
3"	STHS-48	2.1	STHS-48HO	1.6		
3 1/4"	STHS-52	2.3	STHS-52HO	1.9		
3 1/2"	STHS-56	2.6	STHS-56HO	2.2		
3 3/4"	STHS-60	2.8	STHS-60HO	2.4		
4"	STHS-64	3.2	STHS-64HO	2.7		

• Additional sizes available on request

BRAZED-CARBIDE HOLE SAWS

TUB, TILE & SPA HST SERIES



2" Drilling Depth Standard

Complete Saw includes:

- Hole saw cutter-head
- Shank (HS-S4 or HS-S6)
- Pilot (Carbide tipped)
- Spring

Will cut:

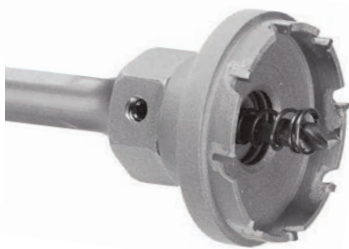
Spas & Hot Tubs
Ceramic Tile*
Marble* / Granite*
Gelcoat Fiberglass

*Because of the differing densities of these materials, the number of holes cut may vary. Slow drilling speeds are recommended, and in some cases, marble and granite may not be drillable with carbide tools

DIAMETER	COMPLETE		CUTTER-HEAD ONLY		REPLACEMENT SHANKS	REPLACEMENT PILOTS/SPRINGS	
	PART NO.	WT. (lbs)	PART NO.	WT. (lbs)	PART NO.	PART NO.	WT. (lbs)
3/4"	HST-12	0.4	HST-12HO	0.3	S-12 (See below for specs.)	CP-42	0.1 Carbide-Tipped 1/4" Diameter - 2" DD
7/8"	HST-14	0.4	HST-14HO	0.3			
1"	HST-16	0.6	HST-16HO	0.3	HS-S4 (Supplied w/ complete saw)	ES-42	0.1 Ejector Spring
1 1/8"	HST-18	0.8	HST-18HO	0.3			
1 1/4"	HST-20	0.8	HST-20HO	0.4			
1 3/8"	HST-22	0.9	HST-22HO	0.4	HS-S47		
1 1/2"	HST-24	1.0	HST-24HO	0.5			
1 5/8"	HST-26	1.0	HST-26HO	0.6	HS-S410 (See below for specs.)		
1 11/16"	HST-27	1.1	HST-27HO	0.6			
1 3/4"	HST-28	1.1	HST-28HO	0.6	HS-S6 \$15.00 (Supplied w/ complete saw)	CP-62	0.1 Carbide-Tipped 3/8" Diameter - 2" DD
1 15/16"	HST-31	1.2	HST-31HO	0.7			
2"	HST-32	1.3	HST-32HO	0.7	HS-S67 \$20.00 HS-S610 27.00 (See below for specs.)	ES-62	0.1 Ejector Spring
2 1/8"	HST-34	1.3	HST-34HO	0.7			
2 1/4"	HST-36	1.4	HST-36HO	0.8			
2 1/2"	HST-40	1.4	HST-40HO	0.8			
3"	HST-48	1.5	HST-48HO	1.1			

• Additional sizes available on request

THIN GAUGE TG SERIES



NEW 2-PIECE DESIGN
For materials up to 1/4" thick

Excellent for:

- Sheet metal
- Stainless steel
- Thin plastics

Smooth, clean holes
Easy plug removal
Removable shank

DIAMETER	COMPLETE		CUTTER-HEAD ONLY		REPLACEMENT SHANKS	REPLACEMENT PILOTS/SPRINGS	
	PART NO.	WT. (lbs)	PART NO.	WT. (lbs)	PART NO.	PART NO.	WT. (lbs)
3/4"	TG-12	0.4	TG-12HO	0.3	S-12 (See below for specs.)		
13/16"	TG-13	0.4	TG-13HO	0.3			
7/8"	TG-14	0.6	TG-14HO	0.3	HS-S4 (Supplied w/ complete saw)	TGP-4	0.1 High-Speed Steel 1/4" Diameter
1"	TG-16	0.8	TG-16HO	0.3			
1 1/16"	TG-17	0.8	TG-17HO	0.4			
1 1/8"	TG-18	0.9	TG-18HO	0.4	HS-S47	ES-40	0.1 Ejector Spring
1 7/32"	TG-195	1.0	TG-195HO	0.5			
1 1/4"	TG-20	1.0	TG-20HO	0.6	HS-S410 (See below for specs.)		
1 5/16"	TG-21	1.1	TG-21HO	0.6			
1 3/8"	TG-22	1.1	TG-22HO	0.6			
1 7/16"	TG-23	1.2	TG-23HO	0.7			
1 1/2"	TG-24	1.3	TG-24HO	0.7			
1 5/8"	TG-26	1.3	TG-26HO	0.7			
1 3/4"	TG-28	1.4	TG-28HO	0.8			
2"	TG-32	1.4	TG-32HO	0.8			
2 1/8"	TG-34	1.5	TG-34HO	1.1			
2 1/4"	TG-36	1.5	TG-36HO	1.1			
2 3/8"	TG-38	1.5	TG-38HO	1.1			
2 1/2"	TG-40	1.5	TG-40HO	1.1			

• Additional sizes available on request



S-12 Shank

1/2-13 threads, 1/4" pilot hole
 3/8" round shank w/3 flats
 3" OAL Wt. 0.4

HOLE SAW SHANK SPECIFICATIONS

HS-S4 Series Shanks

3/4-10 threads, 1/4" pilot hole
 1/2" round shank w/3 flats

HS-S4 - 3" OAL Wt. 0.5

HS-S47 - 7" OAL Wt. 0.8

HS-S410 - 10" OAL Wt. 1.2

HS-S6 Series Shanks

3/4-10 threads, 3/8" pilot hole
 1/2" round shank w/3 flats

HS-S6 - 3" OAL Wt. 0.5

HS-S67 - 7" OAL Wt. 0.8

HS-S610 - 10" OAL Wt. 1.2

PILOTS FOR HOLE SAWS



PART NO.	DESCRIPTION	WT. (lbs)
CP-41	1/4" X 1" DD CARBIDE-TIPPED	0.1
CP-42	1/4" X 2" DD CARBIDE-TIPPED	0.1
CP-61	3/8" X 1" DD CARBIDE-TIPPED	0.1
CP-62	3/8" X 2" DD CARBIDE-TIPPED	0.1
SP-41	1/4" X 1" DD HIGH-SPEED STEEL	0.1
SP-42	1/4" X 2" DD HIGH-SPEED STEEL	0.1
SP-61	3/8" X 1" DD HIGH-SPEED STEEL	0.1
SP-62	3/8" X 2" DD HIGH-SPEED STEEL	0.1

SPECIALTY HOLE SAW PRODUCTS

How to order a special hole saw

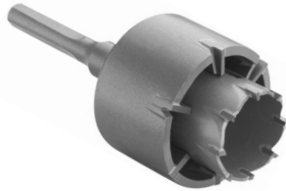
1. Specify material to be cut.
2. Specify diameter.
3. Specify depth of cut.
4. Specify shank diameter (if needed).

Example: 4 1/2" dia x 10"dd Wood Cut with 1 1/4-7 threads for diamond drill rig.

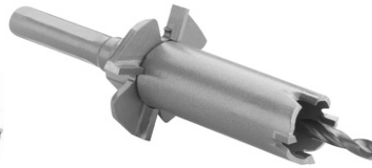
Contact: info@relton.com
(800) 423-1505



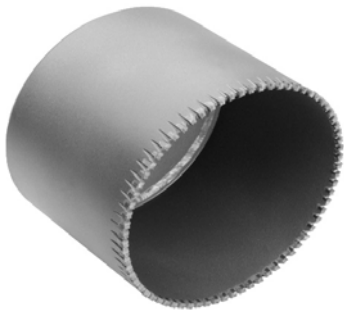
TO FIT DIAMOND DRILL RIGS



BACK HOLE SAWS



WOOD-CUTTING



PIPELINE HOT TAPPING



COUPON-RETAINING PILOT



DEEP-HOLE METAL-CUTTING

PORCELAIN CUTTER KITS

3/8" Shank Diameter



Kit Includes: 1 ea. Porcelain Saw
1 ea. Finish Hole Saw
1 ea. Pilot Drill

For Installing:
Reverse Osmosis Systems
Hot-Water Dispensers
Spa Jets in pre-existing bathtubs



Drill through porcelain and cast iron with pilot bit.



Drill through porcelain only with spring-loaded saw.



Drill through cast iron with finish saw.

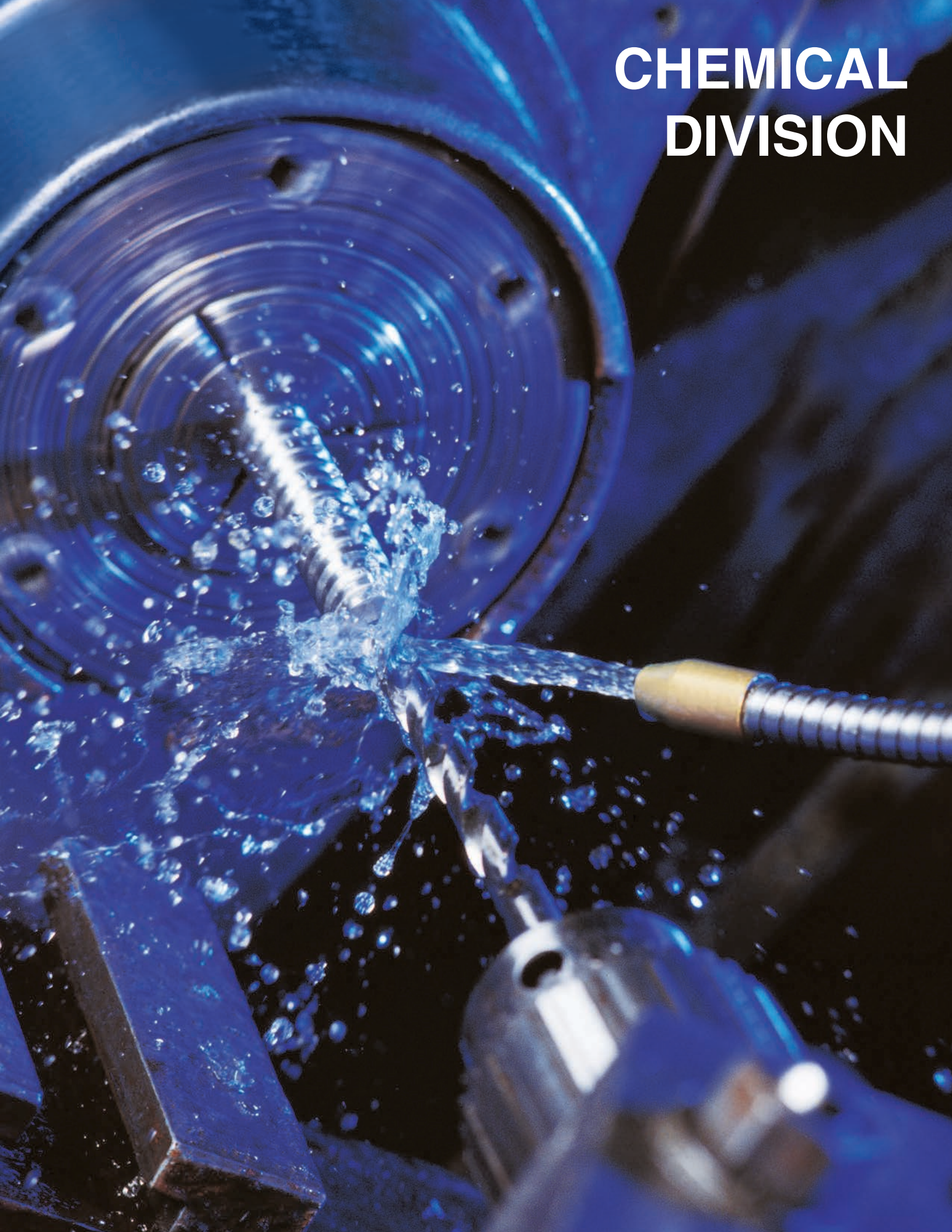
Relton Porcelain Cutter Kits are designed with the Finish Saw 1/8" smaller in diameter than the Porcelain Saw. The Finish Saw diameter is used to determine which kit should be purchased.

Note: Kits are designed for porcelain over cast iron, NOT for solid porcelain.

CONTACT RELTON FOR QUOTE

AVAILABLE SIZES: 7/8", 1", 1-1/4", 1-3/4"
(Finish Hole Diameter)

CHEMICAL DIVISION



METAL-CUTTING FLUIDS



All-Metal Cutting Fluid and Paste



- Greatly extends tool life
- Super-fine machined finish in operation after operation
- Anti-mist protection for a healthier work environment
- No special labeling or reporting
- Excels in tough materials
- Contains no 1,1,1- trichloroethane or other ozone-depleting chemicals

NEW RAPID TAP

PART #	DESCRIPTION	CASE QTY	CASE/DRUM WEIGHT† (LBS.)
04Z-NRT	4 Ounce Bottles	24	8
PNT-NRT	1 Pint Bottles	12	15
01G-NRT	1 Gallon Bottles	4	38
05G-NRT	5 Gallon Pail		47
55G-NRT	55 Gallon Drum		514

NEW RAPID TAP PASTE

PART NO.	DESCRIPTION	CASE QTY.	CASE/DRUM WEIGHT† (LBS)
08Z-NRTP	8 Ounce Jar	12	9



Aluminum-Cutting Fluid



- Eases all operations on aluminum: milling, broaching, drilling, threading, tapping, reaming, sawing, etc.
- Contains anti-mist component for a healthier work environment
- Contains a scientific blend of chemicals that attach to aluminum surfaces, forming an extreme-pressure boundary lubricant between tool and work surface

PART #	DESCRIPTION	CASE QTY	CASE/DRUM WEIGHT† (LBS.)
04Z-A9	4 Ounce Bottles	24	8
PNT-A9	1 Pint Bottles	12	13
01G-A9	1 Gallon Bottles	4	34
05G-A9	5 Gallon Pail		42
55G-A9	55 Gallon Drum		460

† Shipping weights are approximate and rounded to the nearest pound.

METAL-CUTTING FLUIDS

OPTION 1[®]

**Biodegradable
Metal-Cutting Fluid***



- Option 1 leaves no oily residue
- Water-based
- Contains no 1,1,1- trichloroethane or other ozone-depleting chemicals
- Cleans up with clean dry cloth or water
- Great for use in computer clean rooms, hospitals or when a weld operation follows machining operations

PART #	DESCRIPTION	CASE QTY	CASE/DRUM WEIGHT† (LBS.)
04Z-OP	4 Ounce Bottles	24	9
PNT-OP	1 Pint Bottles	12	15
01G-OP	1 Gallon Bottles	4	38
05G-OP	5 Gallon Pail		48
55G-OP	55 Gallon Drum		506

*Not for use on metals that are water reactive, such as magnesium



WARNING: This product can expose you to chemicals including Diethanolamine which is known to the state of California to cause cancer. For more information go to www.P65Warnings.ca.gov

SEMI-SYNTHETIC BAND-SAW COOLANT

REL SAW[™] BAND-SAW COOLANT CONCENTRATE

DILUTES
UP TO
30:1



- Improves blade life
- Stable over a wide variety of water conditions
- Promotes cleaner-running machines compared to soluble oils
- Reduces machine wear
- Long emulsion life
- Contains rust and corrosion inhibitors
- Fortified with boundary lubricants

PART #	DESCRIPTION	CASE QTY	CASE/DRUM WEIGHT† (LBS.)
01G-RS	1 Gallon Bottles	4	38
05G-RS	5 Gallon Pail		45
55G-RS	55 Gallon Drum		507

† Shipping weights are approximate and rounded to the nearest pound.



WARNING: This product can expose you to chemicals including Diethanolamine which is known to the state of California to cause cancer. For more information go to www.P65Warnings.ca.gov

CUTTING OILS

TCO-14™

Dark

Thread-Cutting Oil

- Ready to cut clean, smooth threads on all pipe materials
- Extreme-pressure additive for anti-weld characteristics
- Excellent protection of tools and machined parts against corrosion
- Contains anti-mist component for a healthier work environment

PART #	DESCRIPTION	CASE QTY	CASE/DRUM WEIGHT† (LBS.)
01G-TCO14	1 Gallon Bottles	4	34
05G-TCO14	5 Gallon Pail		42
55G-TCO14	55 Gallon Drum		463



TCO-16™

Light

Thread-Cutting Oil

- Operationally interchangeable with TCO-14 (Dark)

PART #	DESCRIPTION	CASE QTY	CASE/DRUM WEIGHT† (LBS.)
01G-TCO16	1 Gallon Bottles	4	35
05G-TCO16	5 Gallon Pail		42
55G-TCO16	55 Gallon Drum		463



† Shipping weights are approximate and rounded to the nearest pound.

LUBRICATING OILS

Air-FLO[®] AIR TOOL OIL

For piston-driven & rotary air tools

AIR-FLO Air Tool Oil incorporates both the latest technology and finest materials to produce a premium air-tool oil. Manufactured from solvent-refined, hydro-treated paraffinic base stocks, AIR-FLO is fortified with additives to provide anti-wear, extreme-pressure, oxidation-resistance, anti-rust and foam-protection qualities.

- Superior oxidation stability
- Resistance to formation of gums, sludges, and deposits
- Anti-wear fortified for extended life, lower maintenance
- Protection against rust and corrosion
- Excellent seal compatibility
- Metal-wetting properties
- Dirt particles held in suspension
- Contaminants flushing
- 10wt non-detergent

**NOW WITH
PTFE**



PART #	DESCRIPTION	CASE QTY	CASE/DRUM WEIGHT† (LBS.)
04Z-AF	4 Ounce Bottles	24	8
PNT-AF	1 Pint Bottles	12	14
01G-AF	1 Gallon Bottles	4	33
55G-AF	55 Gallon Drum		441

LUBRICATING STICK WAX

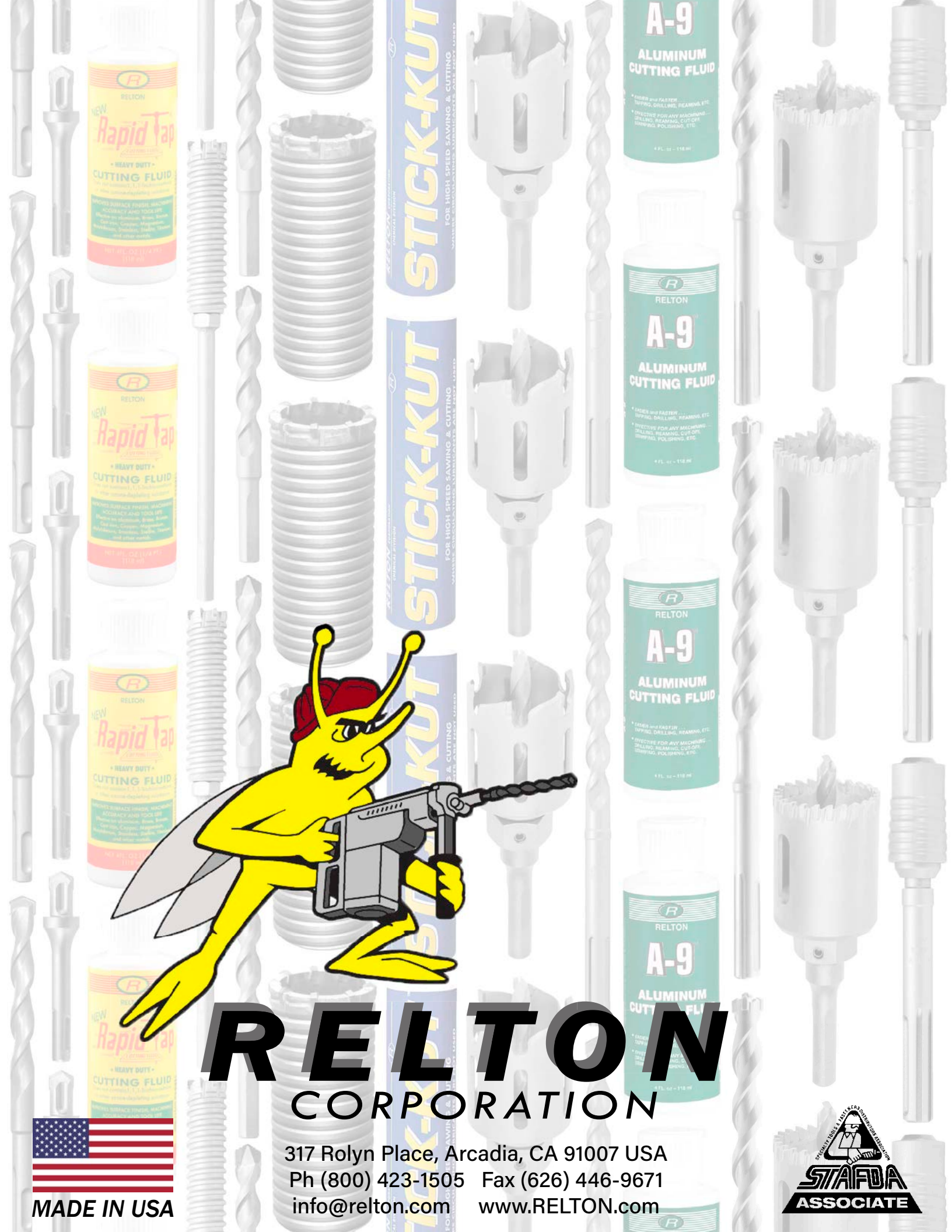
STICK-KUT[™] LUBRICATING STICK WAX

- Safe and effective lubricant for grinding wheels, sanding belts and saw blades
- Provides smooth, cool cutting
- Eliminates heat build up and belt loading
- Reduces loading, stops binding, and prevents burring
- Extends wheel life



PART #	DESCRIPTION	CASE QTY	CASE WEIGHT† (LBS.)
15-SK	15 Ounce Stick	12	12

† Shipping weights are approximate and rounded to the nearest pound.



RELTON CORPORATION

317 Rolyn Place, Arcadia, CA 91007 USA
Ph (800) 423-1505 Fax (626) 446-9671
info@relton.com www.RELTON.com

